


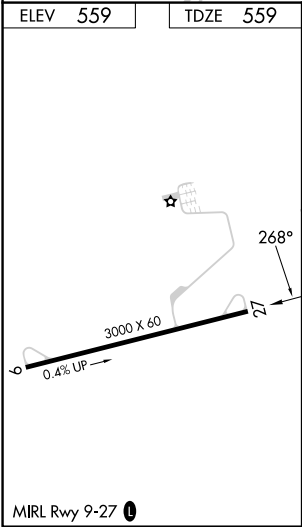
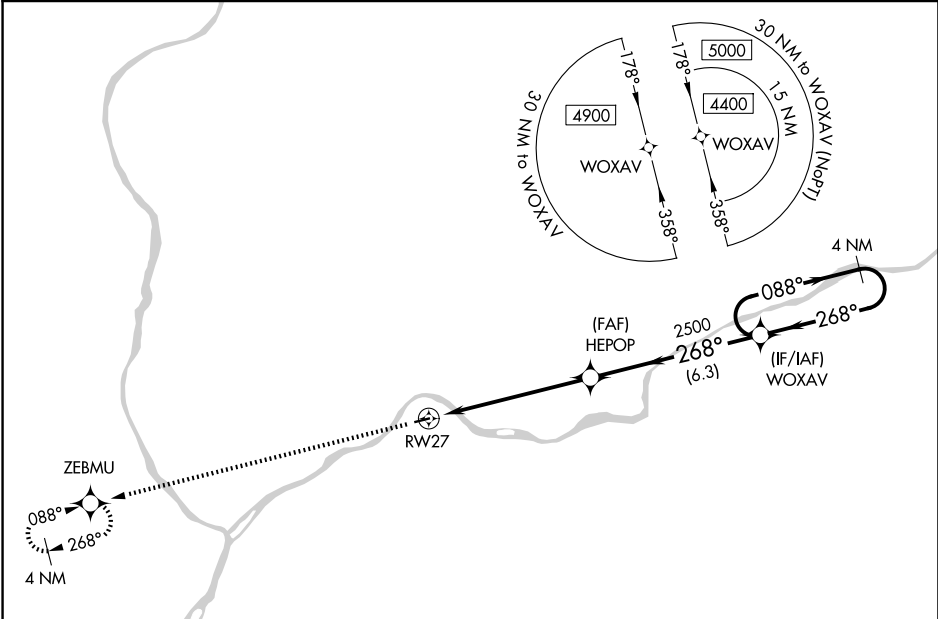


APP CRS	Rwy Ldg	3000
268°	TDZE	559
	Apt Elev	559

RNAV (GPS) RWY 27
DANVILLE (8N8)

RNP APCH - GPS.		MISSED APPROACH: Climb to 4400 direct ZEBMU and hold, continue climb-in-hold 4400.
	Use Williamsport altimeter setting; when not received, procedure NA.	
	Procedure NA at night. Rwy 27 helicopter visibility reduction below 1 SM NA.	
IPT ASOS 125.225	WILKES-BARRE APP CON 126.3 256.7	UNICOM 122.8 (CTAF) 



4400 ZEBMU Visual Segment - Obstacles.		4 NM Holding Pattern	
HEPOP 2500		WOXAV 4400	
RWY 27		088° 268°	
6 NM		6.3 NM	
CATEGORY	A	B	C D
LNAV MDA	1540-1¼ 981 (1000-1¼)	1540-1½ 981 (1000-1½)	NA