

WAAS CH <b>72627</b> <b>W33A</b>	APP CRS <b>331°</b>	Rwy Idg TDZE Apt Elev	<b>3600</b> <b>1343</b> <b>1345</b>
--	------------------------	-----------------------------	---

RNAV (GPS) RWY 33

PENDER MUNI (0C4)

RNP APCH.

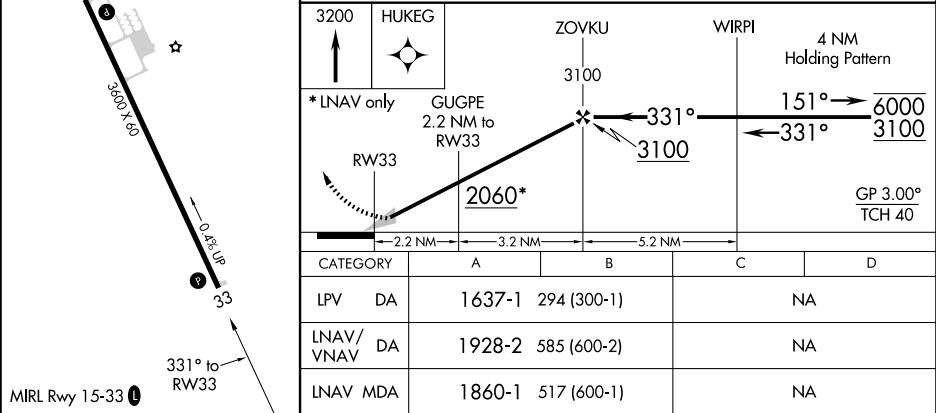
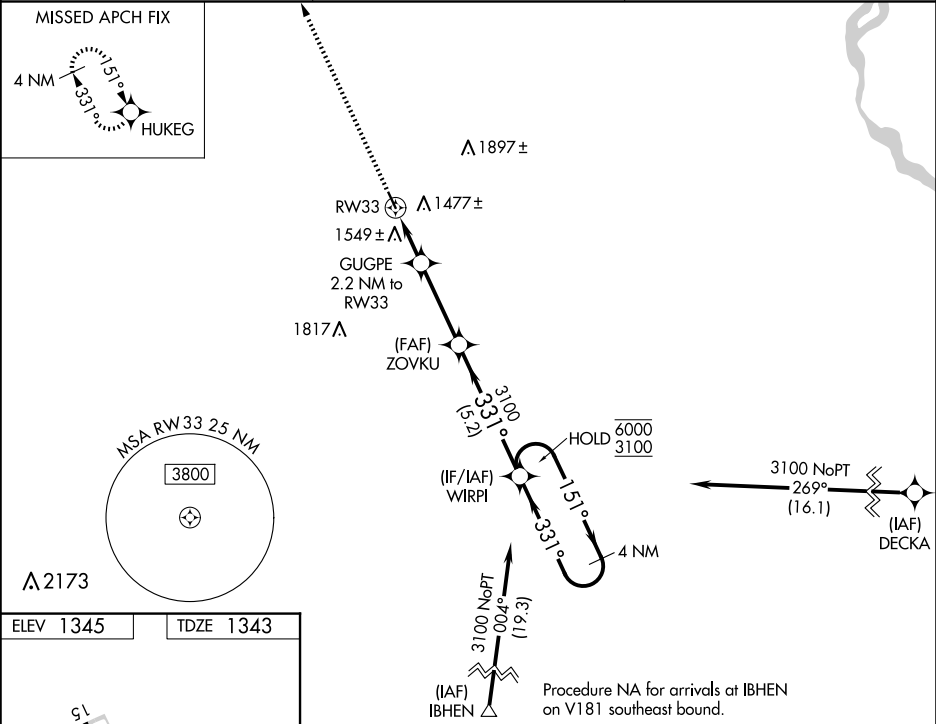
▼

NA

Baro-VNAV NA. Use Wayne altimeter setting; when not received, use Sioux City altimeter setting: increase LPV DA to 1681 feet and LNAV/VNAV DA to 1972 feet and all MDAs 60 feet.

MISSED APPROACH: Climb to 3200 direct HUKUG and hold.

LCG AWOS-3 <b>120.125</b>	SIoux CITY APP CON ★ <b>124.6 307.0</b>	CTAF <b>122.9</b>
------------------------------	--	----------------------



NC-2, 07 AUG 2025 to 04 SEP 2025

NC-2, 07 AUG 2025 to 04 SEP 2025