

WAAS
CH **99327**
W15A

APP CRS
151°

Rwy Idg
TDZE **1345**
Apt Elev **1345**

RNAV (GPS) RWY 15

PENDER MUNI (ØC4)

RNP APCH.

▼

NA

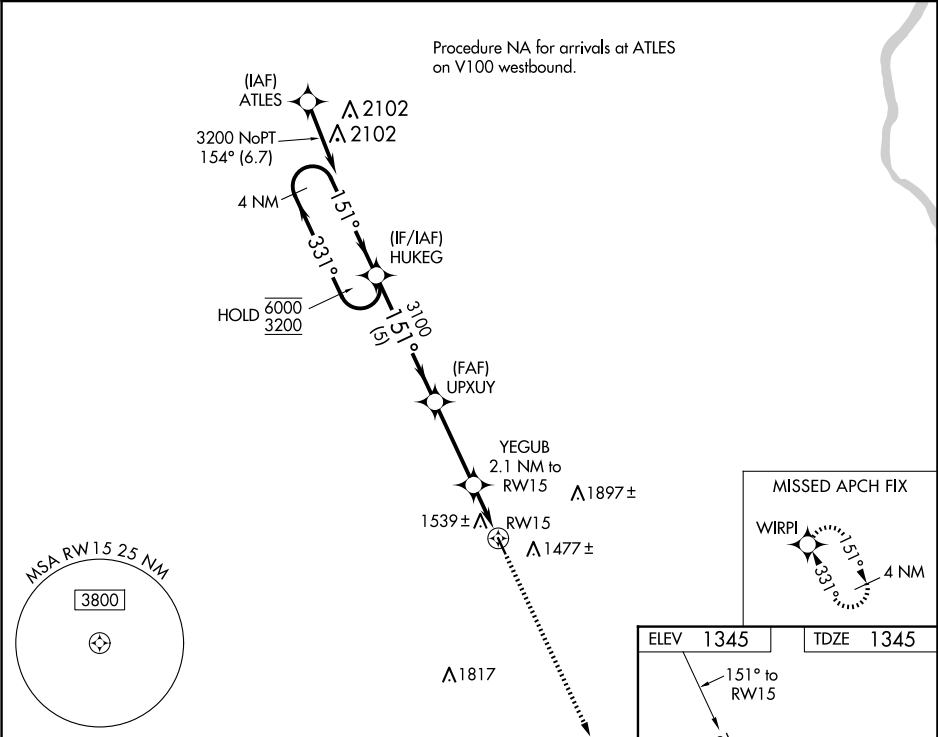
Rwy 15 helicopter visibility reduction below $\frac{3}{4}$ SM NA. Baro-VNAV NA. Use Wayne altimeter setting; when not received, use Sioux City altimeter setting: increase LPV DA to 1722 feet, LNAV/VNAV DA to 1934 feet and all MDAs 60 feet.

MISSED APPROACH: Climb to 3100 direct WIRPI and hold.

LCG AWOS-3
120.125

SIoux CITY APP CON *
124.6 307.0

CTAF
122.9



4 NM Holding Pattern

6000
3200

← 331°
151° →

GP 3.00°
TCH 40

HUKEG

UPXUY

YEGUB 2.1 NM to RW15

RW15

3100

3100

3100

WIRPI

* LNAV only

* 2040

5 NM

3.3 NM

2.1 NM

CATEGORY	A	B	C	D
LPV DA	1678-1	333 (400-1)	NA	
LNAV/VNAV DA	1890-17 $\frac{7}{8}$	545 (600-17 $\frac{7}{8}$)	NA	
LNAV MDA	1840-1	495 (500-1)	NA	

ELEV 1345

TDZE 1345

151° to RW15

3600 X 60

0.4% UP

33

MIRL Rwy 15-33