

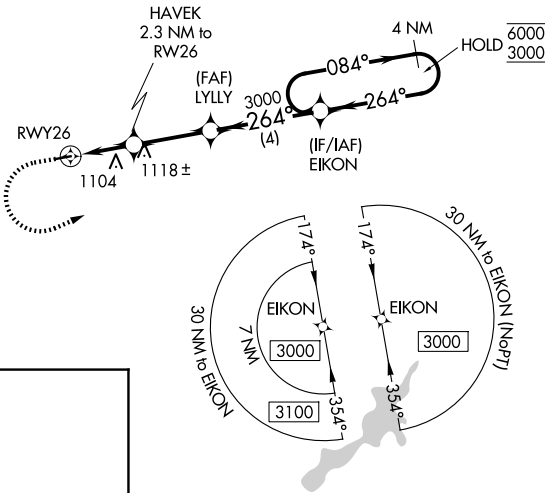
APP CRS	Rwy Ldg	N/A
264°	TDZE	N/A
	Apt Elev	720

RNAV (GPS)-A

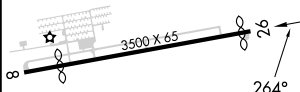
MORaine AIR PARK (I73)

RNP APCH - GPS.	MISSED APPROACH: Climb to 1500 then climbing left turn to 3000 direct EIKON and hold.
NA Procedure NA at night. Rwy 8 and 26 helicopter visibility reduction below 1 SM NA. Use Dayton-Wright Brothers altimeter setting.	

MGY ASOS 118.375	COLUMBUS APP CON 118.85 269.275	UNICOM 122.7 (CTAF)
---------------------	------------------------------------	------------------------



ELEV 720



1500		3000		EIKON		4 NM Holding Pattern					
		RW26		HAVEK 2.3 NM to RW26		LYLLY		EIKON		084° → 6000	
				1780		264° ← 3000				← 264° 3000	
		2.3 NM		2.8 NM		4 NM					
CATEGORY		A		B		C		D			
CIRCLING		1440-1 720 (800-1)		1520-1 800 (800-1)				NA			