

RNAV (GPS) RWY 35

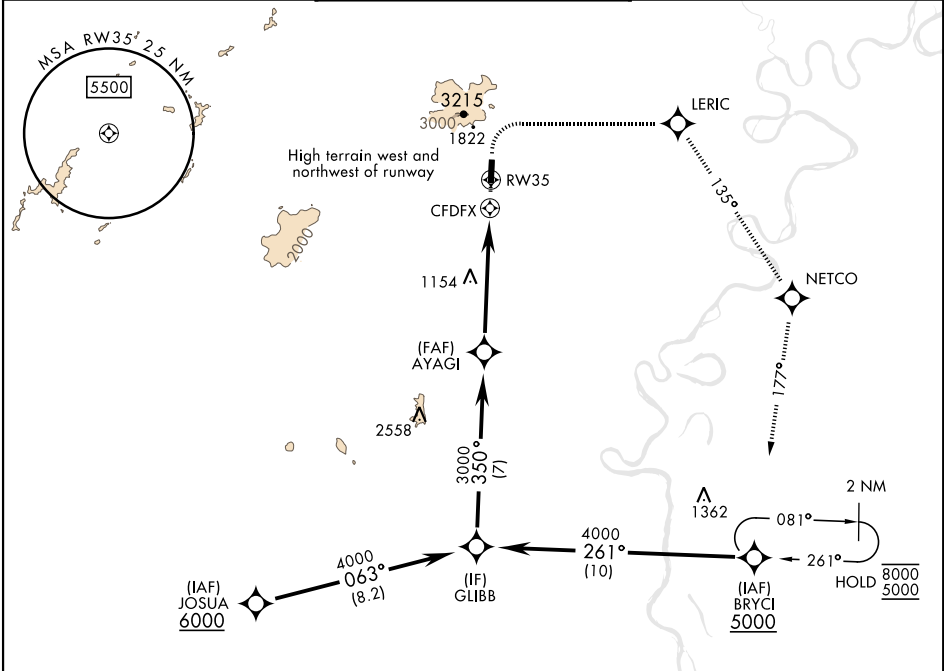
|           |         |
|-----------|---------|
| APCH CRS  | Rwy Idg |
| 350°      | 3820    |
| TDZE      | 925     |
| Arpt Elev | 933     |

[USAF]

TATALINA LRSS (PATL)

|   |  |
|---|--|
| RNP APCH  | MISSED APPROACH: (Do not exceed 165 KIAS until initial turn completion). Climb to 1500 then climbing right turn to 5000 direct LERIC, track 135° to NETCO, track 177° to BRYCI and hold. |
| ▼ Circling not authorized to Rwy 17. Night Operations not authorized. |  |

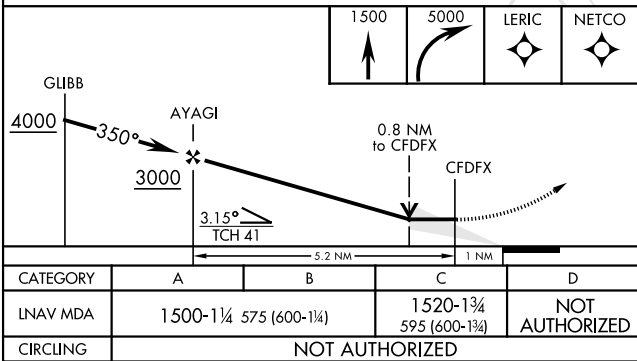
|                      |                              |        |
|----------------------|------------------------------|--------|
| KENAI RADIO<br>122.3 | UNICOM<br>126.2 (CTAF) 364.2 | AWOS-3 |
|----------------------|------------------------------|--------|



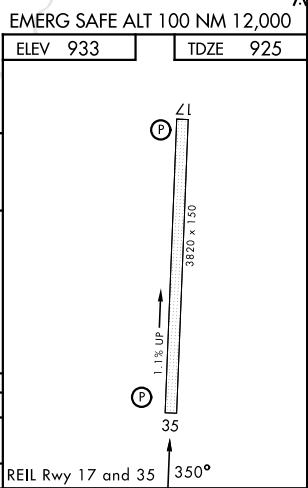
Uncontrolled Airspace below 1200' AGL within 4 NM of Tatalina airport

NOT FOR CIVIL USE

MILITARY CERTIFIED AIRCREWS OR  
AUTHORIZED CONTRACT AIRCRAFT ONLY



| CATEGORY | A                    | B                    | C              | D              |
|----------|----------------------|----------------------|----------------|----------------|
| INAV MDA | 1500-1¼ 575 (600-1¼) | 1520-1¼ 595 (600-1¼) | NOT AUTHORIZED | NOT AUTHORIZED |
| CIRCLING | NOT AUTHORIZED       |                      |                |                |



RNAV (GPS) RWY 35

AK, 07 AUG 2025 to 02 OCT 2025

AK, 07 AUG 2025 to 02 OCT 2025