

APP CRS
068°

Rwy Idg
1991

TDZE
547

Apt Elev
550

RNAV (GPS) RWY 7

KELLER BROTHERS (Ø8N)

RNP APCH.

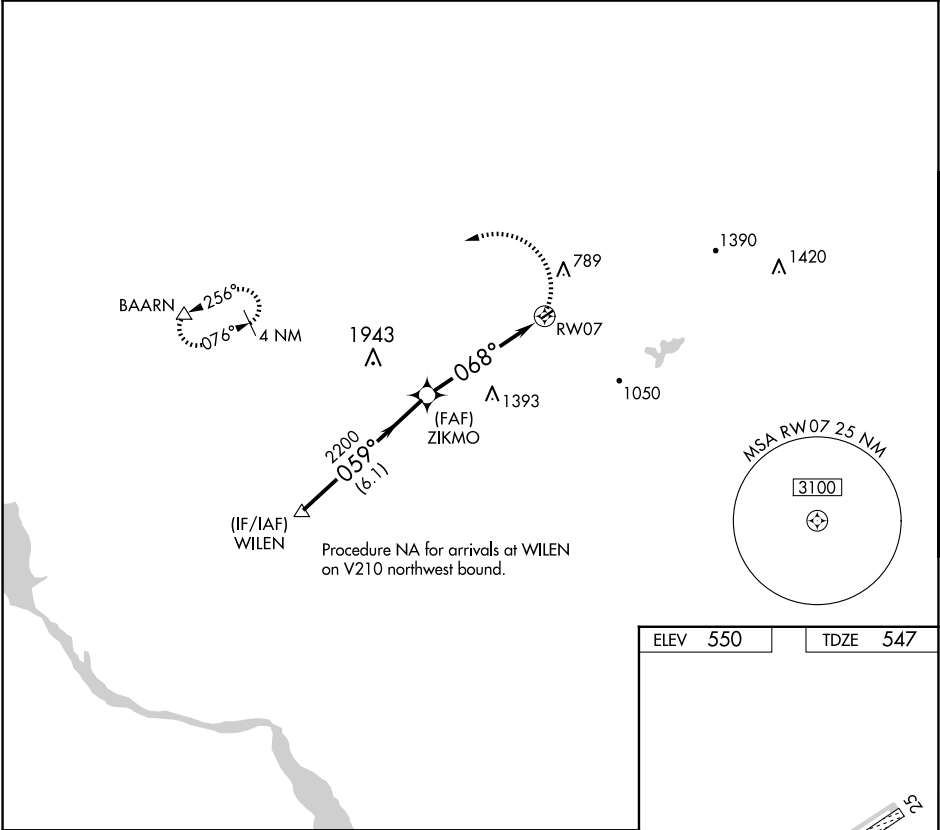
▼

NA

Procedure NA at night. Rwy 7 helicopter visibility reduction below 1 SM NA. Use Lancaster altimeter setting; when not received, use Reading altimeter setting and increase all MDA 40 feet.

MISSED APPROACH: Climbing left turn to 3000 direct BAARN and hold.

LNS ASOS 125.675	HARRISBURG APP CON 126.45 281.525	CTAF 122.9	121.9 0
----------------------------	---	----------------------	----------------



WILEN

Visual Segment - Obstacles.

3000

BAARN

3000

059°

ZIKMO

2200

068°

RW07

6.1 NM

5.1 NM

CATEGORY	A	B	C	D
LNAV MDA	1640-1¼ 1093 (1100-1¼)	1640-1½ 1093 (1100-1½)	NA	

ELEV 550

TDZE 547

2682 x 120

068°

LIRL Rwy 7-25 0