

APP CRS  
**238°**

Rwy Ldg **4098**  
TDZE **1125**  
Apt Elev **1125**

RNAV (GPS) RWY 24

ROBBINS FLD (20A)

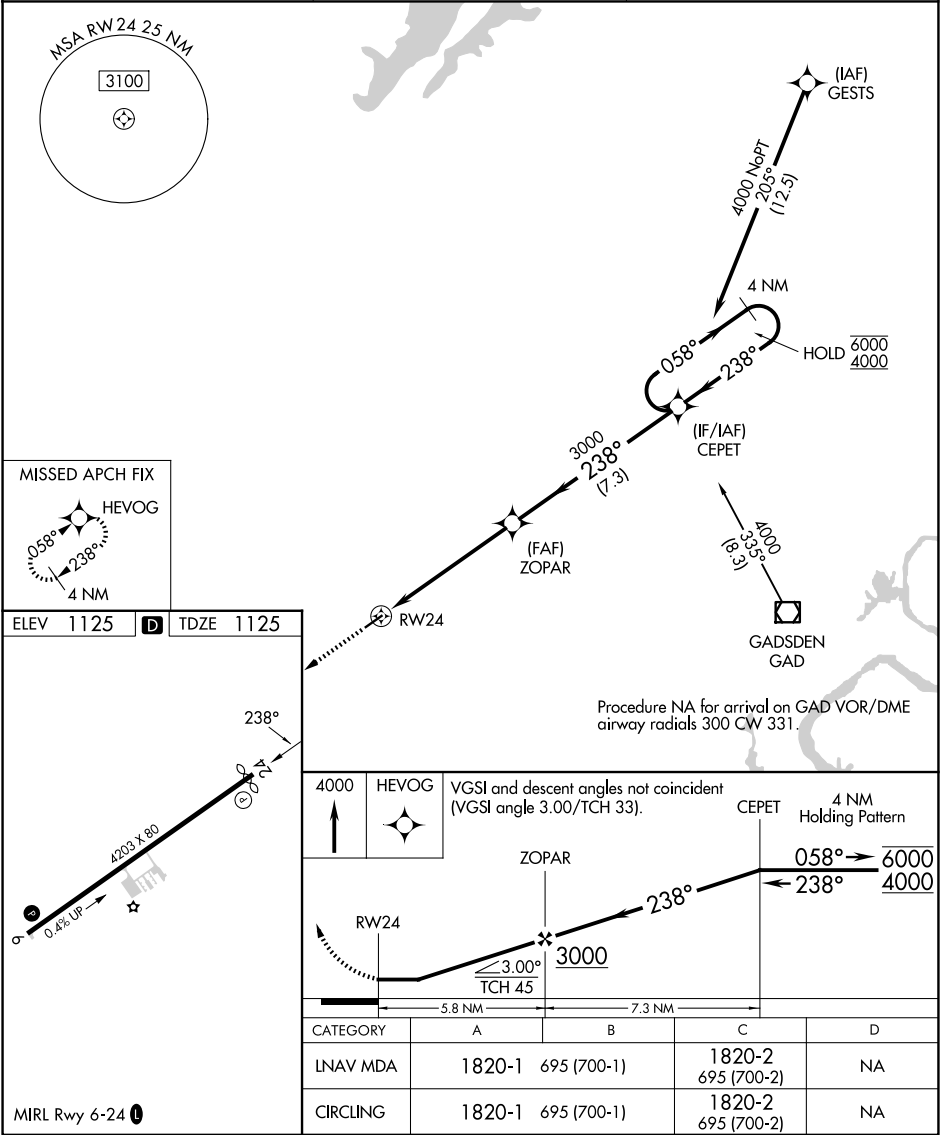
RNP APCH-GPS.

Procedure NA at night. Rwy 24 helicopter visibility reduction below 1 SM NA.

Use BFZ altimeter setting, when not received, use GAD altimeter setting and increase all MDA 60 feet and increase LNAV Cat B visibility ¼ SM, Cat C Circling visibility ¼ SM.

MISSED APPROACH: Climb to 4000 direct HEVOG and hold.

|                                |  |                                 |
|--------------------------------|--|---------------------------------|
| BFZ AWOS-3PT<br><b>119.575</b> | BIRMINGHAM APP CON<br><b>125.45 279.65</b> | UNICOM<br><b>122.8 (CTAF) 0</b> |
|--------------------------------|--|---------------------------------|



SE-4, 07 AUG 2025 to 04 SEP 2025

SE-4, 07 AUG 2025 to 04 SEP 2025