

RNAV GPS RWY 36

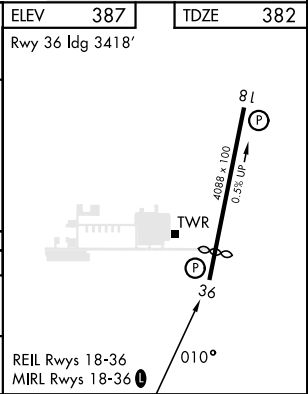
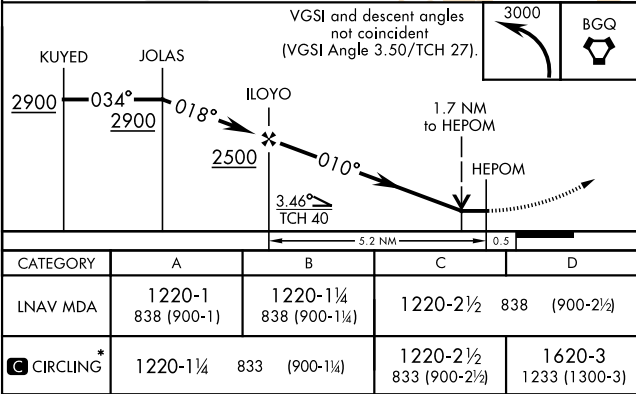
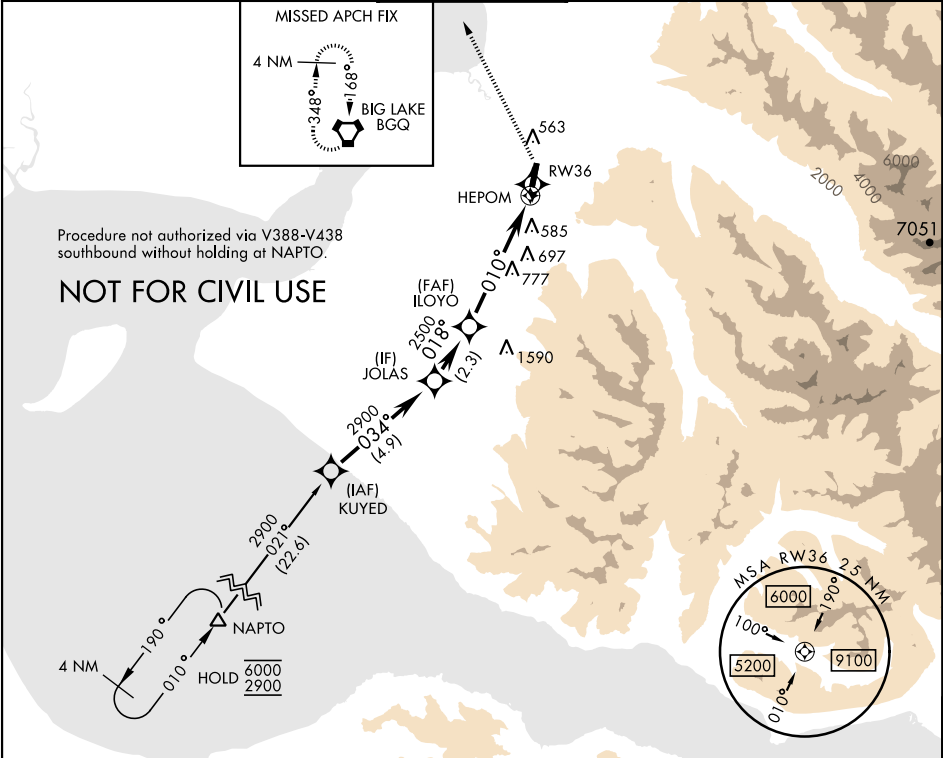
APCH CRS	Rwy ldg	3418
010°	TDZE	382
	Arpt Elev	387

[USA] BRYANT AAF (FORT RICHARDSON) (FRN) (PAFR)

RNP APCH - GPS
▼ Rwy 36 helicopter visibility reduction below 3/4 mile not authorized.
* Circling not authorized E of Rwy 18-36.

MISSED APPROACH: Climbing left turn to 3000 proceed direct BQG VORTAC and hold.

AWOS-3 134.25	ANCHORAGE APP CON 118.6 290.5	TOWER ★ 125.0 (CTAF) 0254.35	GND CON 121.25 239.25	CLNC DEL 119.1 363.2
------------------	----------------------------------	---------------------------------	--------------------------	-------------------------



RNAV GPS RWY 36

AK, 07 AUG 2025 to 02 OCT 2025

AK, 07 AUG 2025 to 02 OCT 2025