

RNAV GPS RWY 18

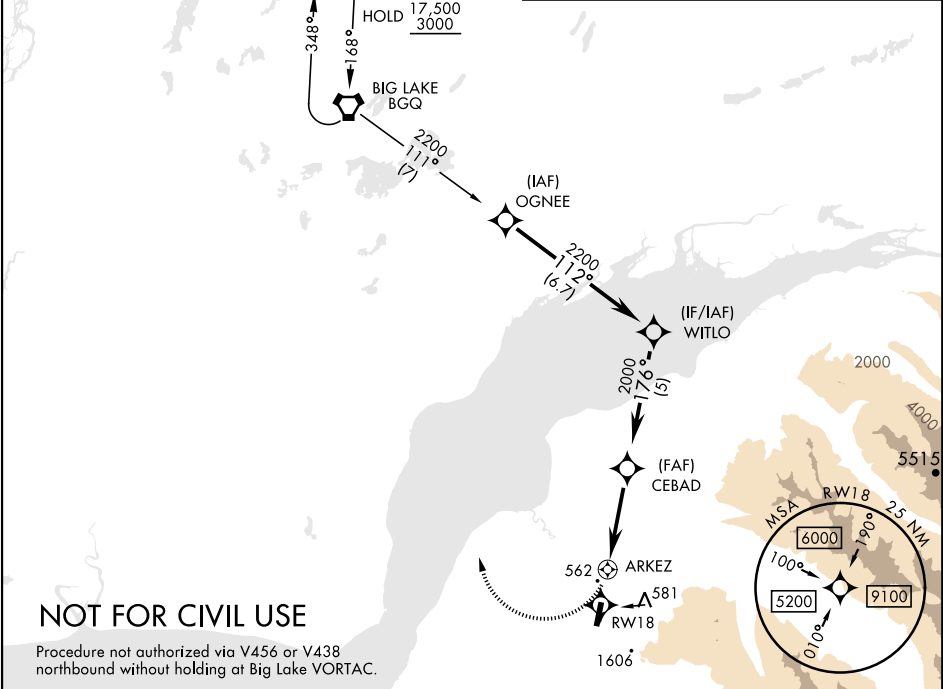
APCH CRS	Rwy Idg	4088
176°	TDZE	387
	Arpt Elev	387



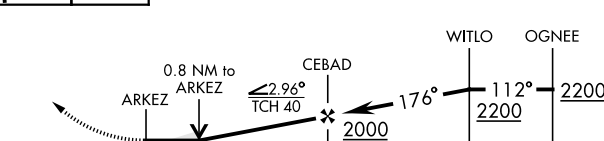

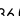
[USA] BRYANT AAF (FORT RICHARDSON) (FRN) (PAFR)

RNP APCH - GPS	MISSED APPROACH: Climbing right turn to 3000 direct BQG VORTAC and hold.
* Circling not authorized E of Rwy 18-36.	

AWOS-3 134.25	ANCHORAGE APP CON 118.6 290.5	TOWER ★ 125.0 (CTAF) 0 254.35	GND CON 121.25 239.25	CLNC DEL 119.1 363.2
------------------	----------------------------------	----------------------------------	--------------------------	-------------------------

	Knots	60	120	180	240	300	360
	V/V(fpm)	242	484	726	968	1210	1452
	Min climb of 242 ft/NM to 1360 - Controlling Obstacle Unk						



<div>3000</div> <div></div> <div>BGQ</div> <div></div>		<div>ELEV 387</div> <div>Rwy 36 ldg 3418'</div>		<div>TDZE 387</div>	
<div></div>					
CATEGORY	A		B	C	D
LNAV MDA	1100-1½ 713 (800-1½)		1100-2 713 (800-2)		
 CIRCLING*	1100-1½ 713 (800-1½)		1100-2 713 (800-2)		1620-3 1233 (1300-3)
<div>MIRL Rwy 18-36 </div> <div>REIL Rwy 18-36</div>					

RNAV GPS RWY 18

AK, 07 AUG 2025 to 02 OCT 2025

AK, 07 AUG 2025 to 02 OCT 2025