

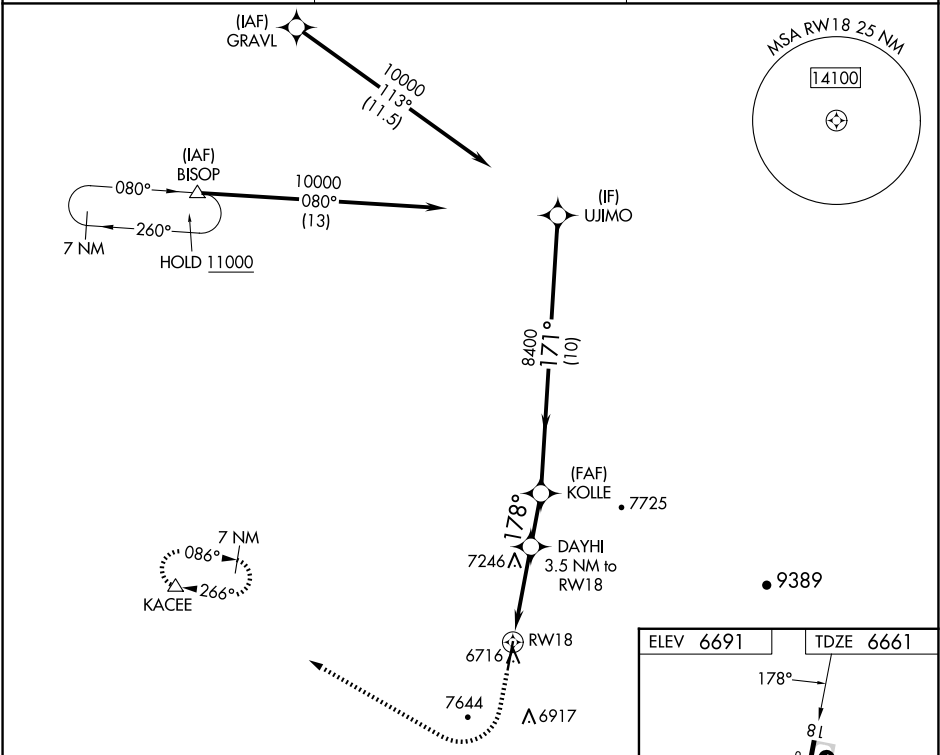
WAAS CH 63043 W18A	APP CRS 178°	Rwy Idg TDZE 6661 Apt Elev 6691
--	------------------------	---

RNAV (GPS) RWY 18

H A CLARK MEML FLD (CMR)

RNP APCH - GPS.	MISSED APPROACH: Climb to 7600, then climbing right turn to 10800 direct KACEE and hold, continue climb-in-hold to 10800.
Procedure NA at night. Rwy 18 helicopter visibility reduction below 1 SM NA. Circling NA east of Rwy 18-36.	

AWOS-3 121.125	ALBUQUERQUE CENTER 128.45 298.9	UNICOM 122.8 (CTAF)
--------------------------	---	-------------------------------



7600	10800	KACEE	VGSI and RNAV glidepath not coincident (VGSI Angle 3.00/TCH 46).		UJIMO
↑	↗	△	DAYHI 3.5 NM to RW18	KOLLE 8400	10000
RW18		↖	7780	8400	GP 3.00° TCH 40
-3.5 NM		-2 NM	-10 NM		
CATEGORY	A	B	C	D	
LPV DA	7281-1¾		620 (600-1¾)		
LNAV MDA	7520-1 859 (900-1)	7520-1¼ 859 (900-1¼)	7520-2½	859 (900-2½)	
CIRCLING	7520-1¼ 829 (900-1¼)	7540-1¼ 849 (900-1¼)	8020-3	1329 (1400-3)	

