

WAAS CH 87122 W36A	APP CRS 358°	Rwy Idg TDZE Apt Elev	4001 284 285
--	------------------------	-----------------------------	---

RNAV (GPS) RWY 36

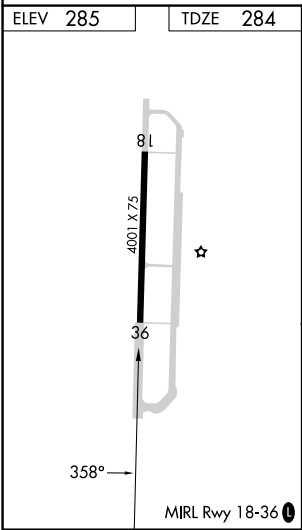
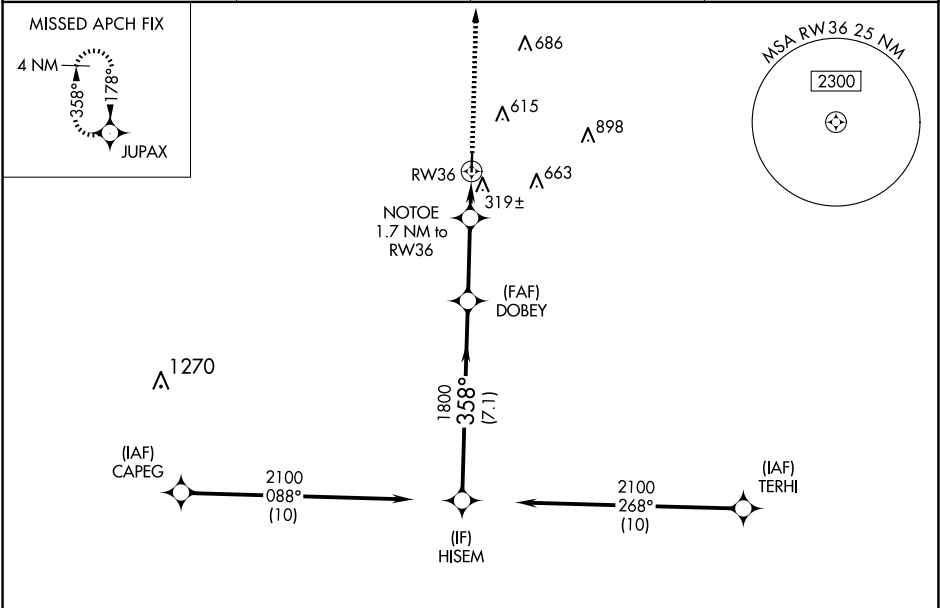
HEARNE MUNI (LHB)

⚠

For uncompensated Baro-VNAV systems, LNAV/VNAV NA below -15°C (5°F) or above 54°C (130°F). DME/DME RNP-0.3 NA. When local altimeter setting not received, use College Station altimeter setting and increase all DA 55 feet and all MDA 60 feet. Increase LPV, LNAV/VNAV all Cats and LNAV Cat C visibility ¼ mile. Increase Circling Cat C visibility ¼ mile. Baro-VNAV and VDP NA when using College Station altimeter setting.

MISSED APPROACH: Climb to 2600 direct JUPAX and hold.

AWOS-3 118.675	HOUSTON APP CON 134.3 360.85	CTAF 122.9	123.3 0
--------------------------	--	----------------------	----------------



RADAR REQUIRED

2600

JUPAX

*LNAV only.

NOTE

1.7 NM to RW36

*0.8 NM to RW36

RW36

DOBEY

1800

358°

2100

860*

1800

GP 3.00°

TCH 40

CATEGORY	A	B	C	D
LPV DA	484-¾	200 (200-¾)		NA
LNAV/VNAV DA	534-⅞	250 (300-⅞)		NA
LNAV MDA	580-1	296 (300-1)	580-⅞ 296 (300-⅞)	NA
CIRCLING	800-1 515 (600-1)	920-1 635 (700-1)	1020-2 735 (800-2)	NA