

SEWARD, ALASKA

AL-10600 (FAA)

25163

APP CRS <b>166°</b>	Rwy Ldg TDZE Apt Elev	<b>N/A</b> <b>N/A</b> <b>28</b>
------------------------	-----------------------------	---------------------------------------

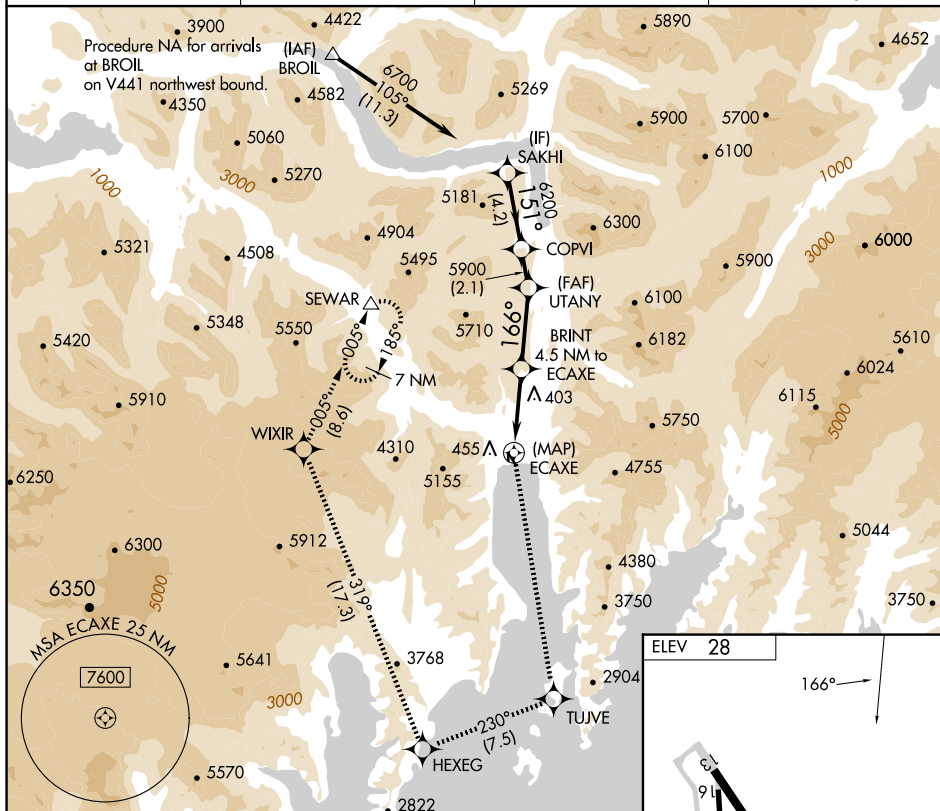
RNAV (GPS)-A  
SEWARD (SWD) (PAWD)

RNP APCH-GPS.

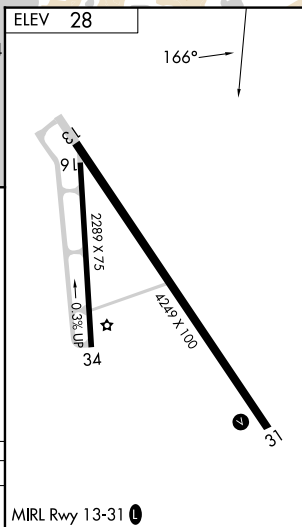
**T** When local altimeter setting not received, procedure NA.  
**A** Circling NA southwest Rwy 13 and west of Rwy 34.  
**☼** Procedure NA at night. Rwy 13, 16, 31 and 34 helicopter  
 visibility reduction below 1 SM NA.

**MISSED APPROACH:** Climb to 9500 direct TUJVE and on track 230° to HEXEG and on track 319° to WIXIR and on track 005° to SEWAR and hold.

ASOS <b>135.2</b>	ANCHORAGE CENTER <b>119.7 269.0</b>	KENAI RADIO <b>122.6</b>	CTAF <b>122.9</b>
----------------------	--	-----------------------------	----------------------



9500 ↑	TUJVE ✦	tr 230° ✦	HEXEG tr 319° ✦	WIXIR tr 005° ✦	SEWAR △	SAKHI
CATEGORY	A		B		C	D
CIRCLING	2660-1¼ 2632 (2700-1¼)		2660-1½ 2632 (2700-1½)		NA	



SEWARD, ALASKA

Orig-B 17JUN21

60°08'N-149°25'W

SEWARD (SWD) (PAWD)  
RNAV (GPS)-A

AK, 07 AUG 2025 to 02 OCT 2025

AK, 07 AUG 2025 to 02 OCT 2025