

APP CRS
061°

Rwy Ldg
TDZE
1436

Apt Elev
1436

RNAV (GPS) RWY 6

EAGLE'S NEST (W13)

RNP APCH.

NA

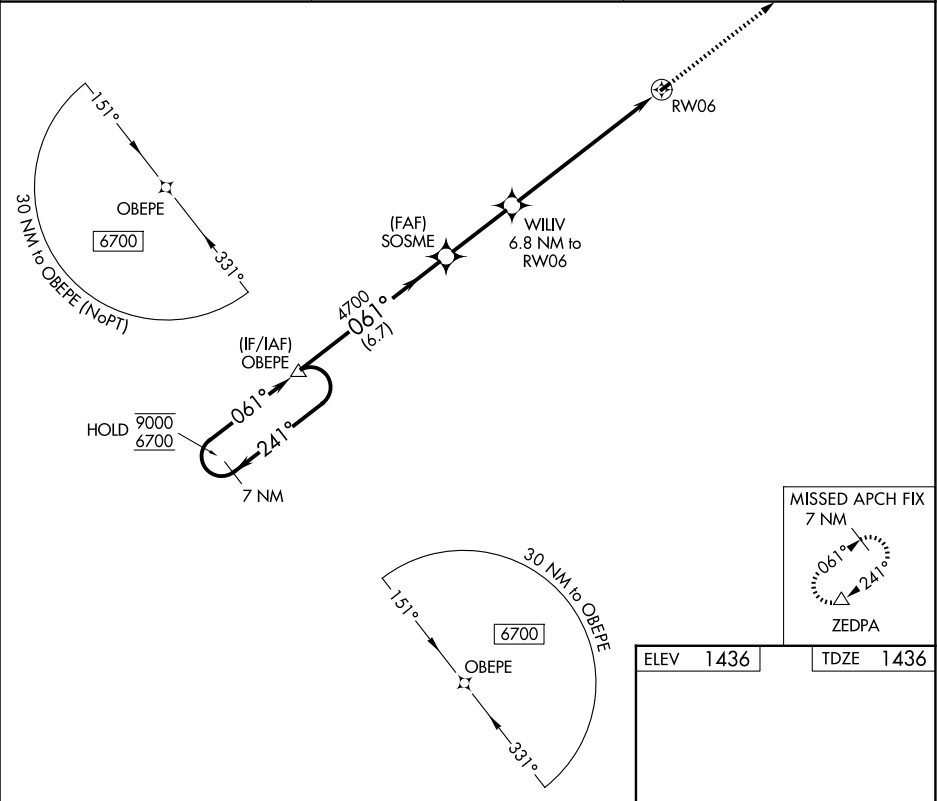
Rwy 6 helicopter visibility reduction below 1 SM NA. Procedure NA at night.

MISSED APPROACH: Climb to 6300 direct ZEDPA and hold, continue climb-in-hold to 6300.

AWOS-3PT
118.625

POTOMAC APP CON
132.85 323.125

UNICOM
123.05 (CTAF) 0



7 NM Holding Pattern		Visual Segment - Obstacles.		6300	ZEDPA
9000 6700		OBEPE		SOSME	WILIV 6.8 NM to RW06
241°		061°		4700	3700
6.7 NM		3 NM		6.8 NM	
CATEGORY	A	B	C	D	
LNAV MDA	2440-3	1004 (1100-3)	NA		
CIRCLING	2440-3	1004 (1100-3)	NA		

