

APP CRS	Rwy Ldg	2004
241°	TDZE	1436
	Apt Elev	1436

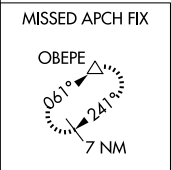
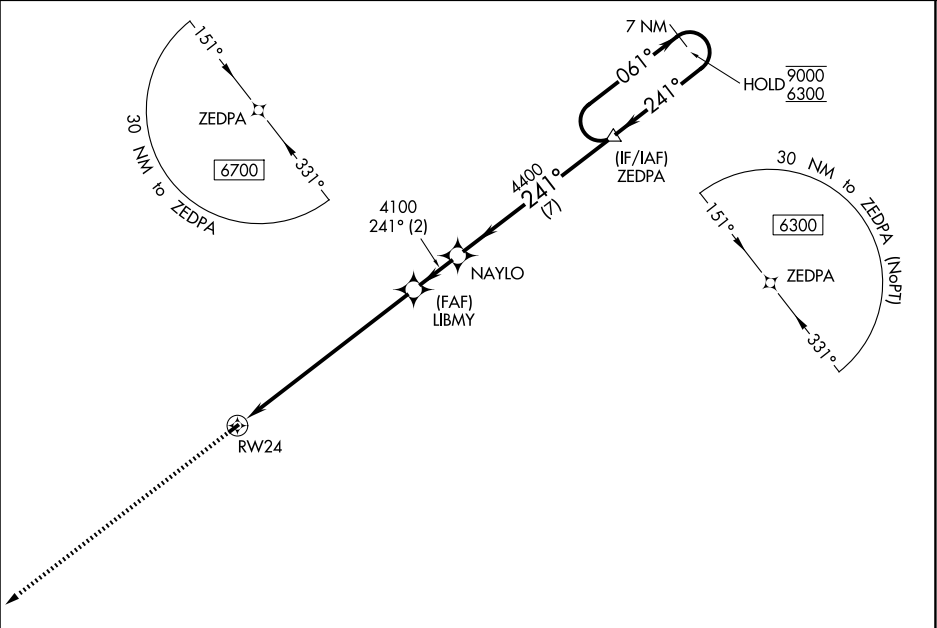
RNAV (GPS) RWY 24

EAGLE'S NEST (W13)

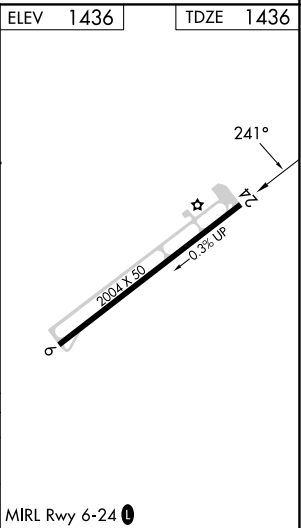
RNP APCH.
NA Procedure NA at night. Rwy 24 helicopter visibility reduction below 1 SM NA.

MISSED APPROACH: Climb to 6700 direct OBEPE and hold, continue climb-in-hold to 6700.

AWOS-3PT 118.625	POTOMAC APP CON 132.85 323.125	UNICOM 123.05 (CTAF) 0
---------------------	-----------------------------------	---------------------------



6700	OBEPE	Visual Segment - Obstacles.	ZEDPA	7 NM Holding Pattern
↑	△			
RW24	LIBMY	NAYLO	4100	4400
8 NM	2 NM	7 NM		
CATEGORY	A	B	C	D
LNVA MDA	2640-3	1204 (1300-3)	NA	
CIRCLING	2640-3	1204 (1300-3)	NA	



NE-3, 07 AUG 2025 to 04 SEP 2025

NE-3, 07 AUG 2025 to 04 SEP 2025