

WAAS CH 86839 W35A	APP CRS 350°	Rwy Idg TDZE Apt Elev 4500 2082 2086
--	------------------------	--

RNAV (GPS) RWY 35

COMANCHE COUNTY (3K8)

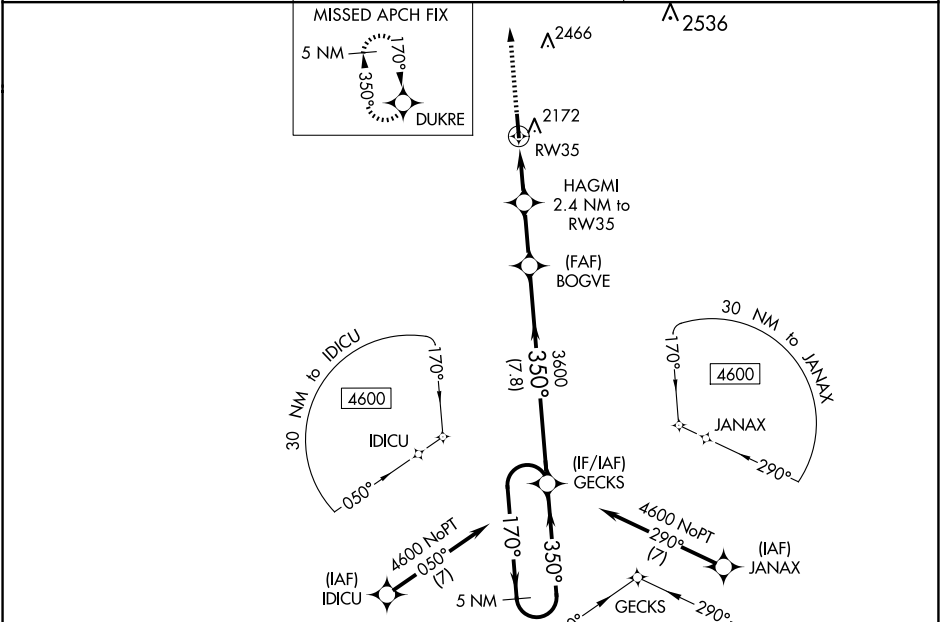
▼

▲

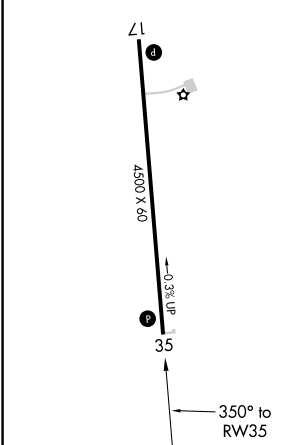
Baro-VNAV NA when using Pratt altimeter setting. DME/DME RNP-0.3 NA. Rwy 35 Helicopter visibility reduction below ¾ SM NA. When local altimeter setting not received, use Pratt altimeter setting and increase LPV DA to 2554 and LNAV/VNAV DA to 2572 and all MDA 120 feet; increase LPV all Cats visibility ½ SM, LNAV/VNAV all Cats visibility ½ SM, LNAV Cat C visibility ¼ SM, and increase Circling Cat C visibility ½ SM.




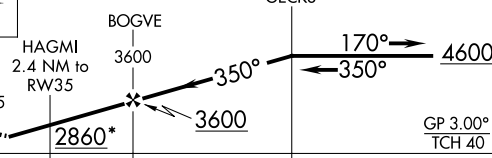

MISSED APPROACH: Climb to 4600 direct DUKRE and hold.

AWOS-3PT 118.05	KANSAS CITY CENTER 126.95 379.2	CTAF 122.9
---------------------------	---	----------------------



ELEV 2086	TDZE 2082
REIL Rwy 17 and 35	
MIRL Rwy 17-35	



4600		DUKRE		5 NM Holding Pattern	
					
*LNAV only		HAGMI 2.4 NM to RW35		GECKS	
					
2.4 NM		2.3 NM		7.8 NM	
A		B		C	
CATEGORY					D
LPV DA	2443-1¼ 361 (400-1¼)				NA
LNAV/VNAV DA	2461-1¼ 379 (400-1¼)				NA
LNAV MDA	2540-1 458 (500-1)		2540-1¾ 458 (500-1¾)		NA
 CIRCLING	2620-1 534 (600-1)		2940-2½ 854 (900-2½)		NA

NC-2, 07 AUG 2025 to 04 SEP 2025

NC-2, 07 AUG 2025 to 04 SEP 2025