

WAAS CH <b>70439</b> <b>W17A</b>	APP CRS <b>170°</b>	Rwy Idg TDZE Apt Elev	<b>4500</b> <b>2086</b> <b>2086</b>
--	------------------------	-----------------------------	---

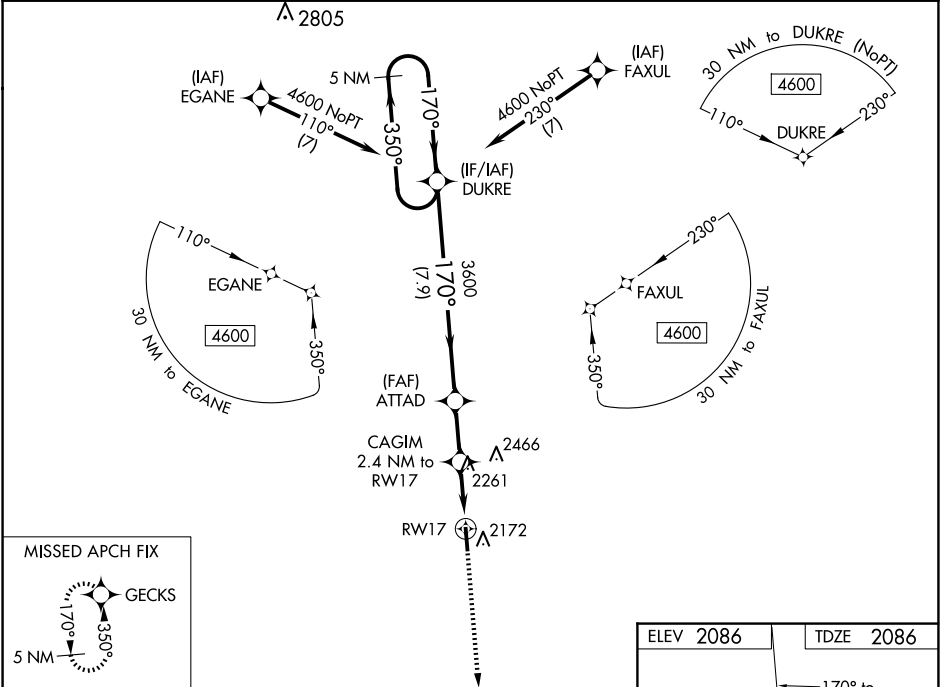
RNAV (GPS) RWY 17

COMANCHE COUNTY (3K8)

**⚠** Baro-VNAV NA when using Pratt altimeter setting. DME/DME RNP-0.3 NA. When local altimeter setting not received, use Pratt altimeter setting and increase LPV and LNAV/VNAV DA to 2558; increase all MDA 120 feet; increase LPV and LNAV/VNAV all Cats visibility ¼ SM, increase LNAV Cat C visibility ¼ SM, and increase Circling Cat C visibility ½ SM.

MISSED APPROACH: Climb to 4600 direct GECKS and hold.

AWOS-3PT <b>118.05</b>	KANSAS CITY CENTER <b>126.95 379.2</b>	CTAF <b>122.9 0</b>
---------------------------	---	------------------------



5 NM Holding Pattern		DUKRE	ATTAD	4600	GECKS
4600 ← 350°		170° →	3600	*LNAV only	
GP 3.00°		170°	3600	CAGIM 2.4 NM to RWY 17	RWY 17
TCH 40		7.9 NM	2.2 NM	2.4 NM	
CATEGORY	A	B	C	D	
LPV DA	2447-1½		361 (400-1½)	NA	
LNAV/VNAV DA	2447-1½		361 (400-1½)	NA	
LNAV MDA	2640-1	554 (600-1)	2640-1½ 554 (600-1½)	NA	
<b>C</b> CIRCLING	2640-1	554 (600-1)	2940-2½ 854 (900-2½)	NA	

