

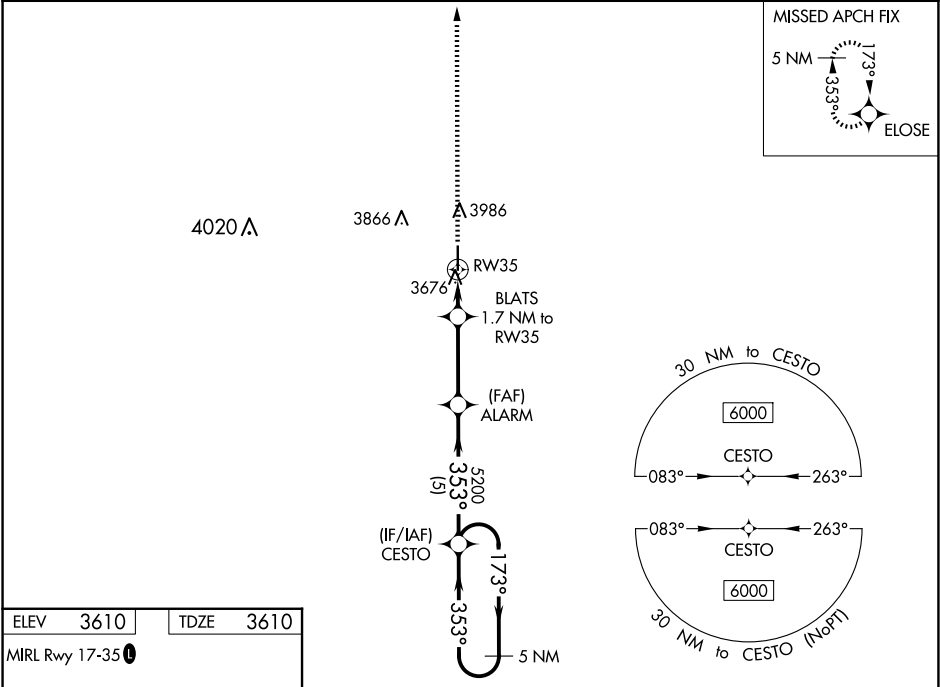
WAAS CH 99537 W35A	APP CRS 353°	Rwy Idg TDZE Apt Elev	5007 3610 3610
--	------------------------	-----------------------------	---

RNAV (GPS) RWY 35

TRIBUNE MUNI (5K2)

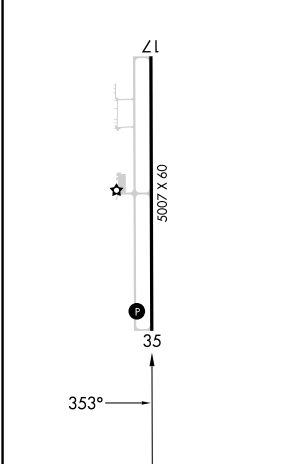
<div><div>▼</div><div>▲ NA</div></div> <div>Baro-VNAV NA when using Syracuse altimeter setting. For uncompensated Baro-VNAV systems, LNAV/VNAV NA below -22°C (-7°F) or above 54°C (130°F). DME/DME RNP-0.3 NA. VDP NA with Syracuse altimeter setting. When local altimeter setting not received, use Syracuse altimeter setting and increase all DA 103 feet and all MDA 120 feet, increase LPV/LNAV/VNAV visibility ¼ mile all Cats, and LNAV visibility Cat C ¾ mile and Circling visibility Cat C ¼ mile.</div>	MISSED APPROACH: Climb to 6000 direct ELOSE and hold.
--	--

AWOS-3PT 119.075	DENVER CENTER 133.4 377.175	UNICOM 122.8 (CTAF)
----------------------------	---------------------------------------	-------------------------------



ELEV 3610	TDZE 3610
-----------	-----------

MIRL Rwy 17-35



6000	ELOSE	BLATS 1.7 NM to RW35	ALARM	CESTO	5 NM Holding Pattern
* LNAV only.		* 0.9 NM to RW35			
RW35					
0.9 NM	0.8 NM	3.2 NM	5 NM		
4180*			5200		
353°			173°		
			353°		
			6000		
			GP 3.00°		
			TCH 40		
CATEGORY	A	B	C	D	
LPV DA	3860-1	250 (300-1)		NA	
LNAV/VNAV DA	3860-1	250 (300-1)		NA	
LNAV MDA	3940-1	330 (400-1)		NA	
CIRCLING	4300-1	690 (700-1)	4300-2 690 (700-2)	NA	