

APP CRS	Rwy Idg	3600
127°	TDZE	1545
	Apt Elev	1545

RNAV (GPS) RWY 12

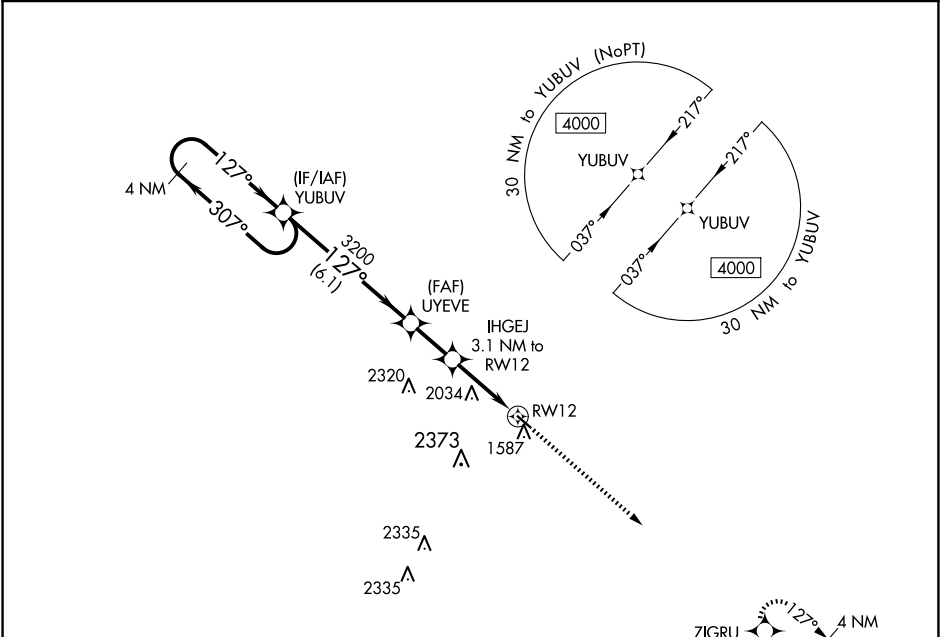
WESSINGTON SPRINGS (4X4)

NA

DME/DME RNP-0.3 NA. When local altimeter setting not received use Mitchell altimeter setting: increase all MDA 100 feet, LNAV visibility Cat C ½ SM and Circling visibility Cat A ¼ SM.

MISSED APPROACH: Climb to 4000 direct ZIGRU and hold.

MINNEAPOLIS CENTER 126.25 339.8	CTAF 122.90
------------------------------------	----------------



ELEV 1545

TDZE 1545

127° to RW12

3600 X 40

0.4% UP

MIRL Rwy 12-30

REIL Rws 12 and 30

4 NM Holding Pattern

YUBUV

UYEVE

IHGEJ

3.1 NM to RW12

2.3 NM to RW12

RW12

4000

307°

127°

3200

3.00°

TCH 40

2580

6.1 NM

2 NM

0.8 NM

2.3 NM

VGSI and descent angles not coincident (VGSI Angle 3.00/TCH 25).

4000

ZIGRU

CATEGORY	A	B	C	D
LNAV MDA	2300-1 755 (800-1)	2300-1¼ 755 (800-1¼)	2300-2 755 (800-2)	NA
CIRCLING	2300-1 755 (800-1)	2340-1¼ 795 (800-1¼)	2720-3 1175 (1200-3)	NA