

WAAS CH 72942 W20A	APP CRS 203°	Rwy Ldg 4000 TDZE 782 Apt Elev 782
--	------------------------	---

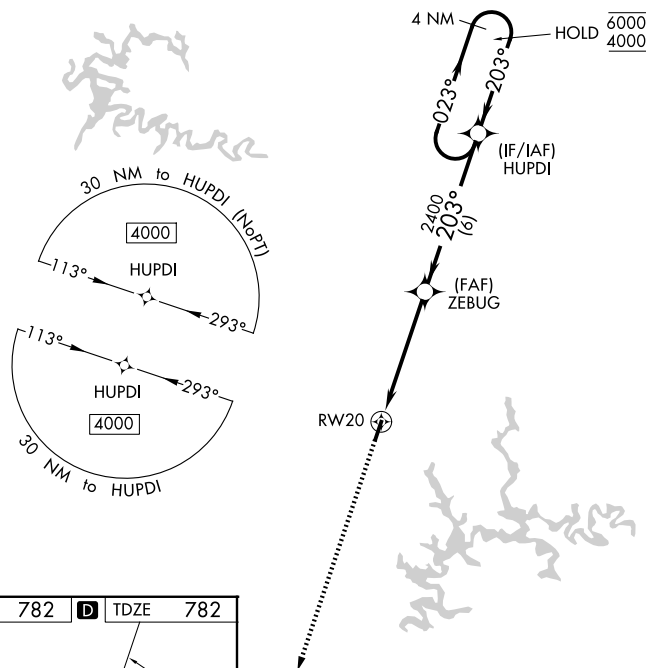
RNAV (GPS) RWY 20
LEITCHFIELD-GRAYSON COUNTY (M20)

RNP APCH.

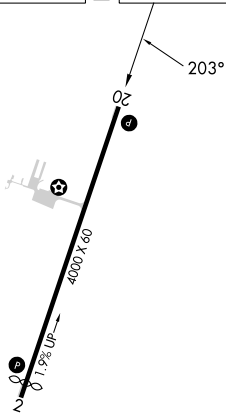
T Rwy 20 helicopter visibility reduction below 1 SM NA.
A Baro-VNAV NA. Use Elizabethtown altimeter setting.
NA Straight-in Rwy 20 NA at night, Circling Rwy 20 NA at night.

MISSED APPROACH: Climb to 4000 direct REBBE and hold, continue climb-in-hold to 4000.

EKX AWOS-3 118.55	INDIANIAPOLIS CENTER 121.175 353.65	UNICOM 123.0 (CTAF) 0
-----------------------------	---	---------------------------------



ELEV	782	D	TDZE	782
------	-----	----------	------	-----



MIRL Rwy 2-20 **L**
REIL Rwys 2 and 20 **L**

4000
↑
REBBE

VGS and RNAV glidepath not coincident
(VGS Angle 3.00/TCH 26).

4 NM
Holding Pattern
HUPDI

023° → 6000
← 203° 4000

ZEBUG
2400

203°

2400

RW20

4.9 NM

6 NM

GP 3.00°
TCH 53

CATEGORY	A	B	C	D
LPV DA	1088-1	306 (400-1)		NA
RNAV/ VNAV	1145-1	363 (400-1)		NA
RNAV MDA	1320-1	538 (600-1)	1320-1½ 538 (600-1½)	NA
CIRCLING	1380-1	598 (600-1)	1380-1½ 598 (600-1½)	NA