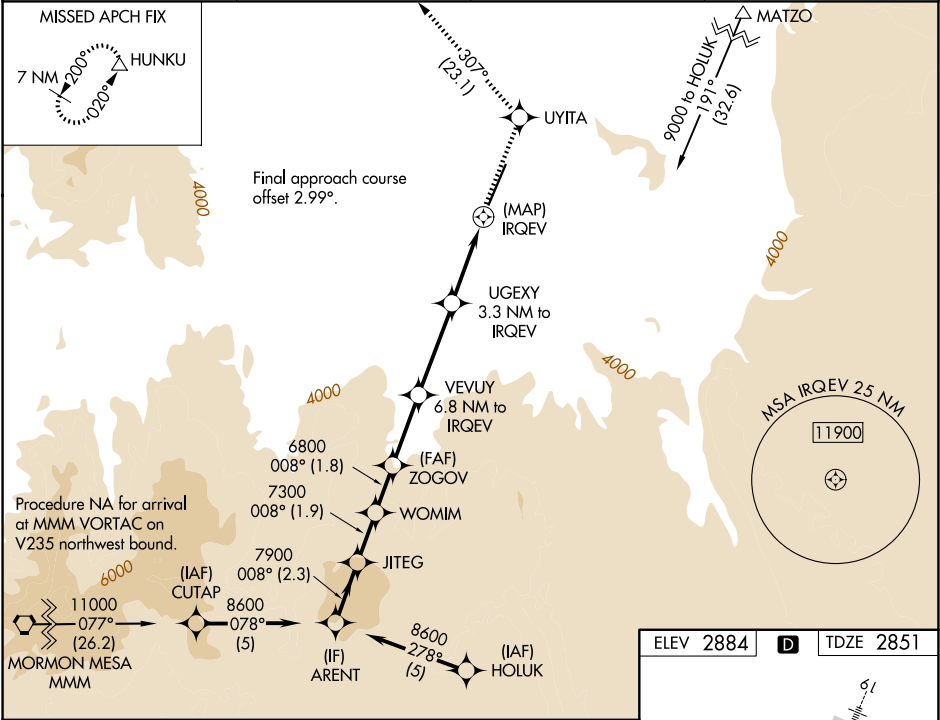


WAAS CH <b>50220</b> <b>W01A</b>	APP CRS <b>008°</b>	Rwy Ldg TDZE Apt Elev	<b>9300</b> <b>2851</b> <b>2884</b>
--	------------------------	-----------------------------	---

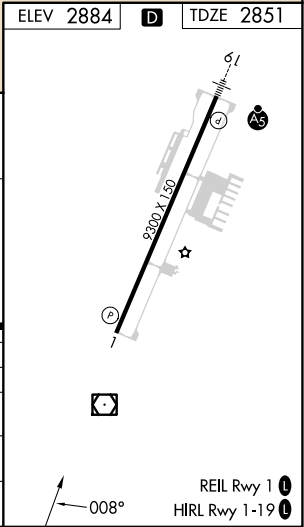
RNAV (GPS) RWY 1  
ST GEORGE RGNL (SGU)

RNP APCH-GPS. ▼ Helicopter visibility reduction below 1 SM NA. ▲ # Missed approach requires a minimum climb of 225 feet per NM to 6800. ⊞ -5°C † Missed approach requires a minimum climb of 220 feet per NM to 6700.	MISSED APPROACH: Climb to 9800 direct UYITA and on track 307° to HUNKU and hold, continue climb-in-hold to 9800.
--	--

AWOS-3PT <b>135.075</b>	LOS ANGELES CENTER <b>124.2 343.6</b>	CLNC DEL <b>133.3</b>	UNICOM <b>123.075</b> (CTAF) <b>0</b>
----------------------------	--	--------------------------	--



ARENT		JITEG		WOMIM		ZOGOV		VEVUY		UGEXY		IRQEV		UYITA		HUNKU	
8600		7900		7300		6800		6800		5700		4340		9800		9800	
GP 3.60°		008°		008°		008°		008°		008°		008°		307°		307°	
TCH 60		2.3 NM		1.9 NM		1.8 NM		2.7 NM		3.5 NM		3.3 NM		0.5			
CATEGORY		A		B		C		D									
LPV DA#		3170-1		319 (300-1)				NA									
LNAV MDA †		3340-1		489 (500-1)		3340-1 3/8		489 (500-1 3/8)				NA					
LNAV MDA		3760-1 1/4		909 (900-1 1/4)		3760-2 1/2		909 (900-2 1/2)				NA					
CIRCLING		3760-1 1/4		876 (900-1 1/4)		3800-1 1/4		916 (1000-1 1/4)		3860-3		976 (1000-3)				NA	



SW-4, 07 AUG 2025 to 04 SEP 2025

SW-4, 07 AUG 2025 to 04 SEP 2025