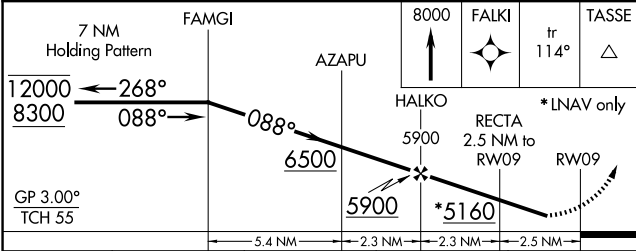
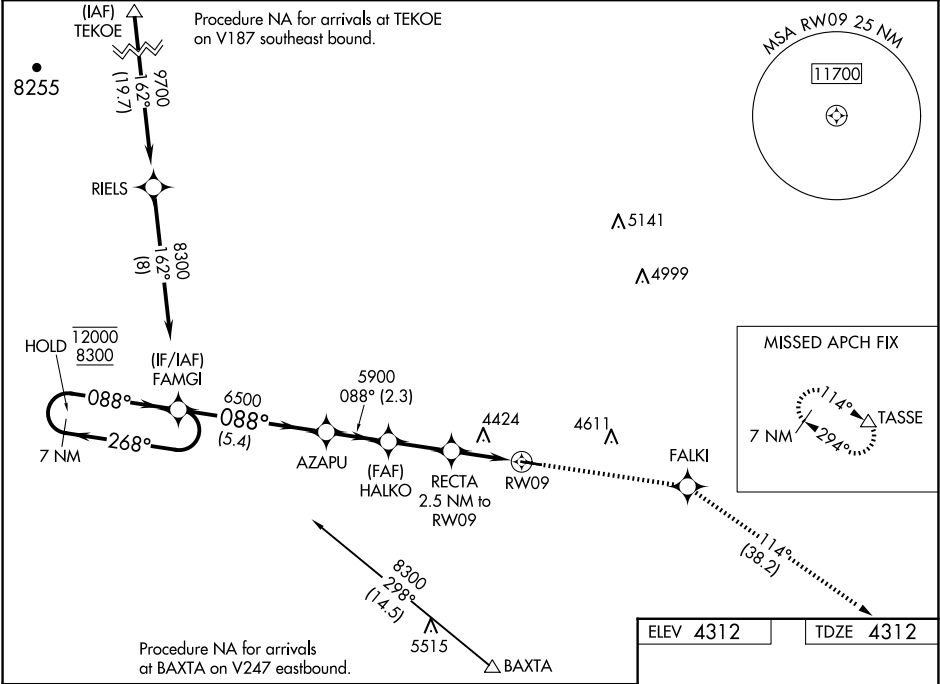


WAAS CH 99443 W09A	APP CRS 088°	Rwy Idg 4200 TDZE 4312 Apt Elev 4312
--	------------------------	---

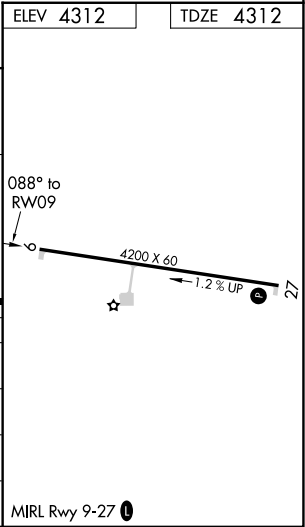
RNAV (GPS) RWY 9
WHEATLAND COUNTY AT HARLOWTON (HWQ)

RNP APCH. ▼ NA Rwy 9 helicopter visibility reduction below 1 SM NA. Baro-VNAV NA. Use Lewistown altimeter setting. Straight-in Rwy 9 NA at night, Circling Rwy 9 NA at night.	MISSED APPROACH: Climb to 8000 direct FALKI and on track 114° to TASSE and hold.
--	--

LWT ASOS 118.375	SALT LAKE CENTER 127.75 351.9	CTAF 122.90
----------------------------	---	-----------------------



CATEGORY	A	B	C	D
LPV DA	4673-1	361 (400-1)		NA
LNAV/VNAV DA	4673-1	361 (400-1)		NA
LNAV MDA	4800-1	488 (500-1)		NA
CIRCLING	4940-1 628 (700-1)	5000-1 688 (700-1)		NA



NW-1, 07 AUG 2025 to 04 SEP 2025

NW-1, 07 AUG 2025 to 04 SEP 2025