

APP CRS	Rwy Ldg	4200
116°	TDZE	4325
	Apt Elev	4328

RNAV (GPS) RWY 12

STANFORD/BIGGERSTAFF FLD (S64)

RNP APCH - GPS.

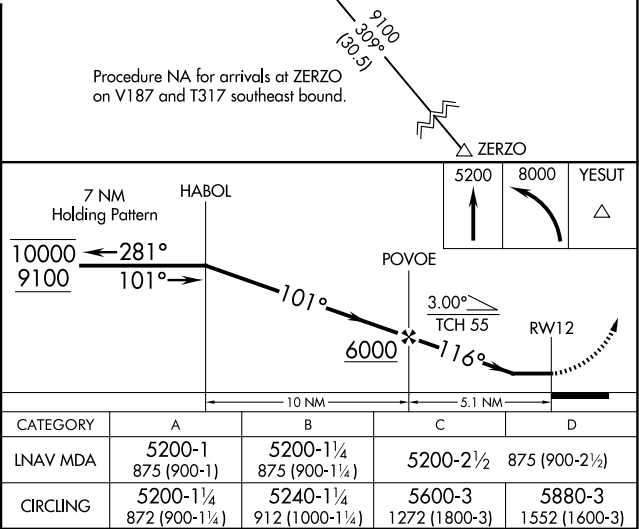
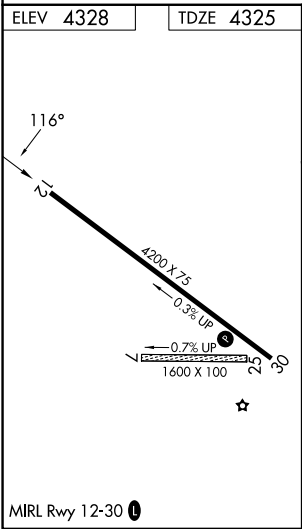
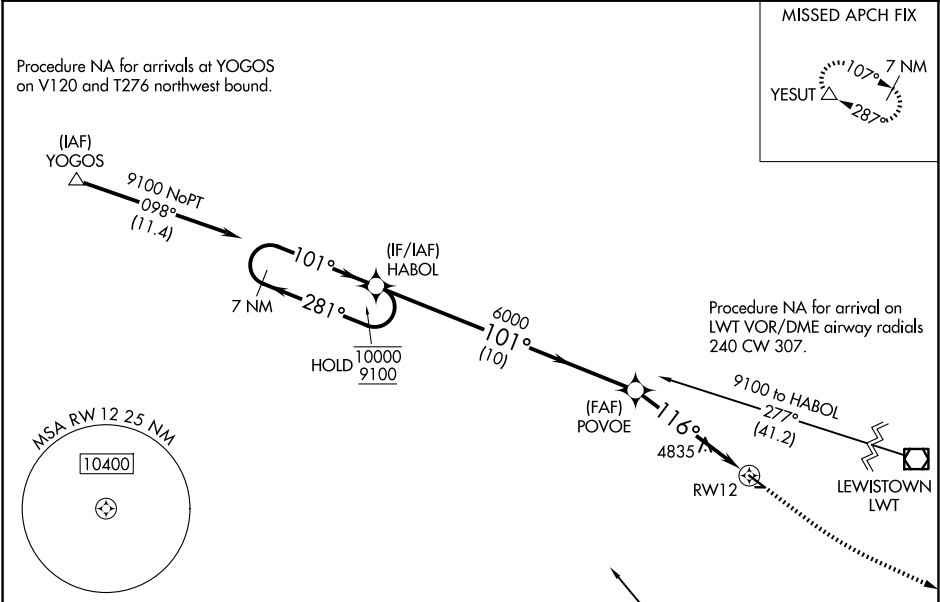
▼

NA

Rwy 12 helicopter visibility reduction below ¾ SM NA. Circling NA to Rwys 7 and 25. Use LWT altimeter setting; when not received, use 19MT altimeter setting and increase all MDAs 60 feet and LNAV visibility Cat A ¼ SM, and Circling visibility Cat B ¼ SM. Procedure NA at night.

MISSED APPROACH: Climb to 5200 then climbing left turn to 8000 direct YESUT and hold.

LWT ASOS 118.375	SALT LAKE CENTER 133.4 285.4	UNICOM 122.8 (CTAF) 0
---------------------	---------------------------------	--------------------------



NW-1, 07 AUG 2025 to 04 SEP 2025

NW-1, 07 AUG 2025 to 04 SEP 2025