

PARIS, IDAHO

AL-10475 (FAA)

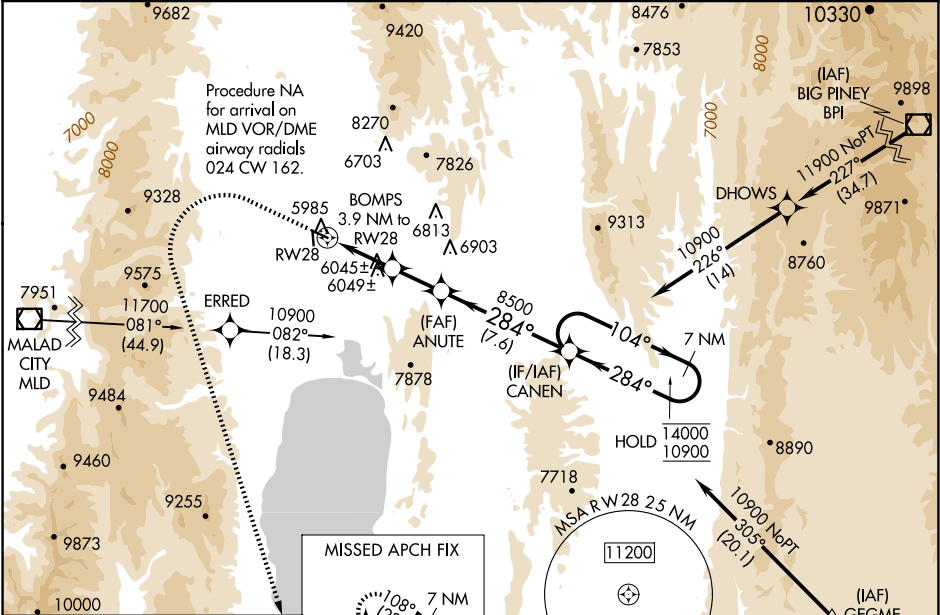
25163

WAAS CH <b>62842</b> <b>W28A</b>	APP CRS <b>284°</b>	Rwy Ldg TDZE Apt Elev <b>5728</b> <b>5933</b> <b>5933</b>
--	------------------------	--

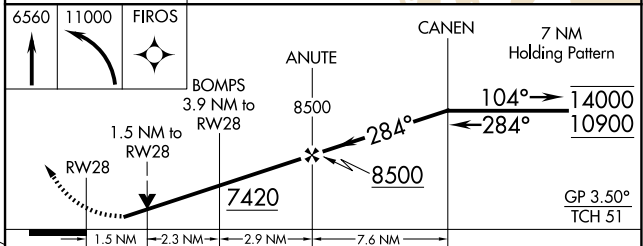
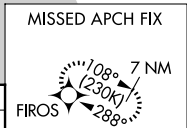
RNAV (GPS) RWY 28  
BEAR LAKE COUNTY (1U7)

RNP APCH - GPS.	MISSED APPROACH: (Do not exceed 185K until FIROS) Climb to 6560 then climbing left turn to 11000 direct FIROS and hold.
For uncompensated Baro-VNAV systems, LNAV/VNAV NA below -26°C or above 35°C.	

AWOS-3 <b>118.525</b>	SALT LAKE CENTER <b>128.35 239.25</b>	UNICOM <b>122.8 (CTAF) 0</b>
--------------------------	--	---------------------------------



ELEV 5933	TDZE 5933
-----------	-----------



CATEGORY	A	B	C	D
LPV DA	6305-1 372 (400-1)			
LNAV/VNAV DA	6366-1¼ 433 (500-1¼)			
LNAV MDA	6560-1 627 (700-1)		6560-1¾ 627 (700-1¾)	
CIRCLING	6560-1 627 (700-1)		6720-2¼ 787 (800-2¼)	7140-3 1207 (1300-3)

PARIS, IDAHO  
Amdt 1A 20MAR25

42°15'N-111°20'W

BEAR LAKE COUNTY (1U7)  
RNAV (GPS) RWY 28

NW-1, 07 AUG 2025 to 04 SEP 2025

NW-1, 07 AUG 2025 to 04 SEP 2025