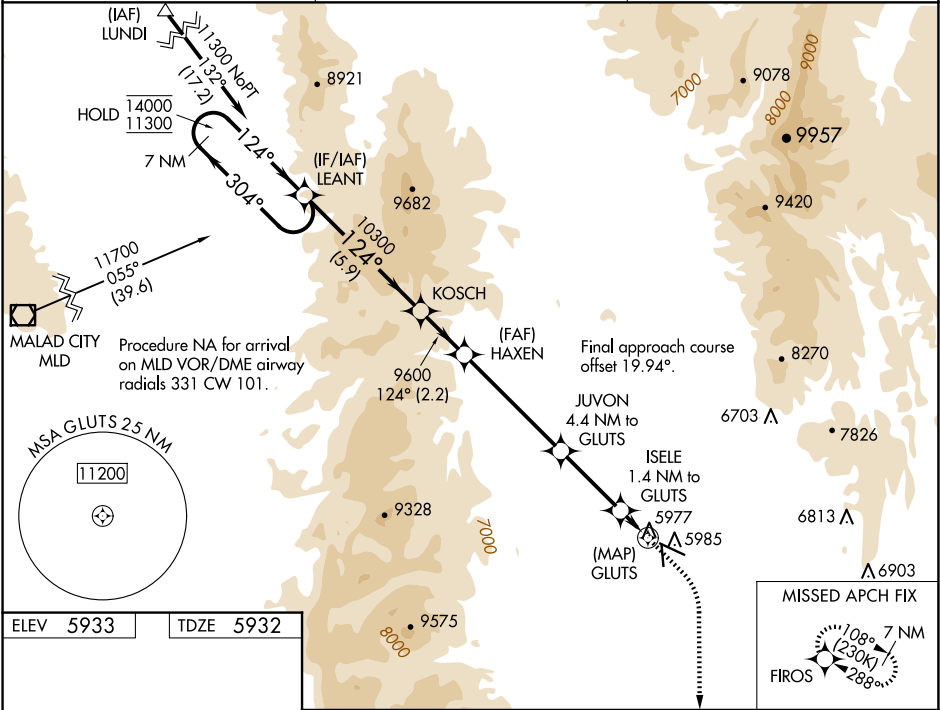


WAAS CH <b>65742</b> <b>W10A</b>	APP CRS <b>124°</b>	Rwy Ldg TDZE Apt Elev <b>5728</b> <b>5932</b> <b>5933</b>
--	------------------------	--

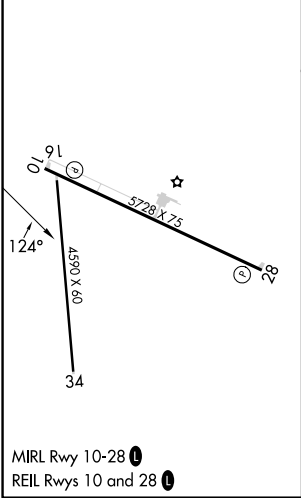
RNAV (GPS) RWY 10  
BEAR LAKE COUNTY (1U7)

RNP APCH - GPS. ▼ ▲ ☒ -22°C	MISSED APPROACH: (Do not exceed 185K until FIROS) Climb to 6340 then climbing right turn to 11000 direct FIROS and hold.
--------------------------------------	--

AWOS-3 <b>118.525</b>	SALT LAKE CENTER <b>128.35 239.25</b>	UNICOM <b>122.8 (CTAF) 0</b>
--------------------------	--	---------------------------------



ELEV 5933	TDZE 5932
-----------	-----------



7 NM Holding Pattern	LEANT	KOSCH	HAXEN	JUVON	ISELE	GLUTS	FIROS
14000 11300	304° 124°	124°	10300	9600	7780	6660	6340 11000
	5.9 NM	2.2 NM	4.9 NM	3 NM	1.4 NM	0.5 NM	
CATEGORY	A	B	C	D			
LP MDA	6240-1	308 (400-1)					
LNAV MDA	6240-1	308 (400-1)					
CIRCLING	6320-1 387 (400-1)	6440-1 507 (600-1)	6720-2¼ 787 (800-2¼)	7140-3 1207 (1300-3)			