

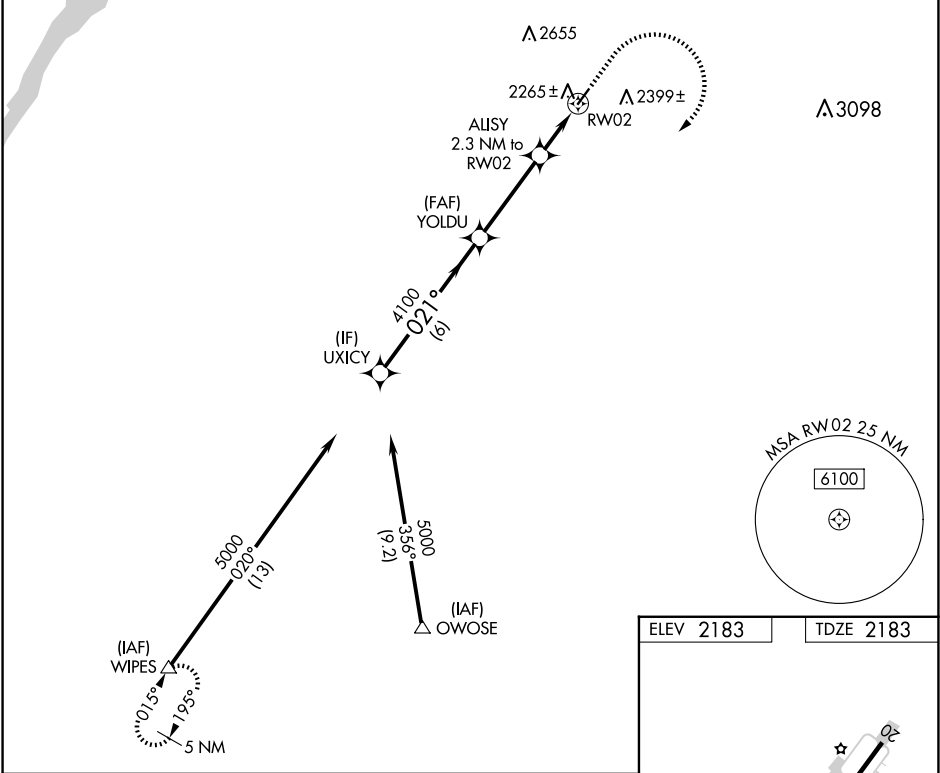
APP CRS	Rwy Idg	3851
021°	TDZE	2183
	Apt Elev	2183

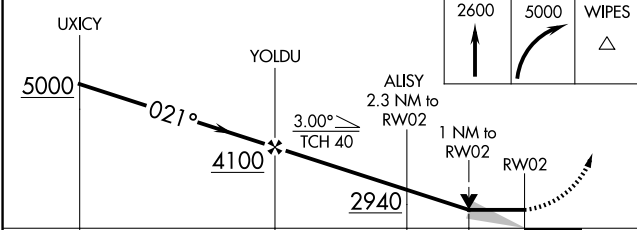
RNAV (GPS) RWY 2

WILBUR (2S8)

RNP APCH - GPS.	MISSED APPROACH: Climb to 2600, then climbing right turn to 5000 direct WIPES and hold.
▼ Circling Rwy 20 NA at night. When local altimeter setting not received, use EPH altimeter setting and increase all MDAs 240 feet and LNAV visibility Cat C/D ½ SM, and Circling visibility Cat B/C/D ¾ SM. VDP NA with EPH altimeter setting.	

AWOS-2 124.175	GRANT COUNTY APP CON ★ 126.4 379.95	CTAF 122.9 0
-------------------	--	-----------------



				
CATEGORY	A	B	C	D
LNAV MDA	2520-1 337 (400-1)			
CIRCLING	2660-1 477 (500-1)	2760-1 577 (600-1)	2960-2¼ 777 (800-2¼)	2960-2½ 777 (800-2½)

