

APP CRS  
**018°**

Rwy Idg  
TDZE  
Apt Elev  
**N/A**  
**N/A**  
**756**

**RNAV (GPS)-A**  
OTTAWA EXEC (Z98)

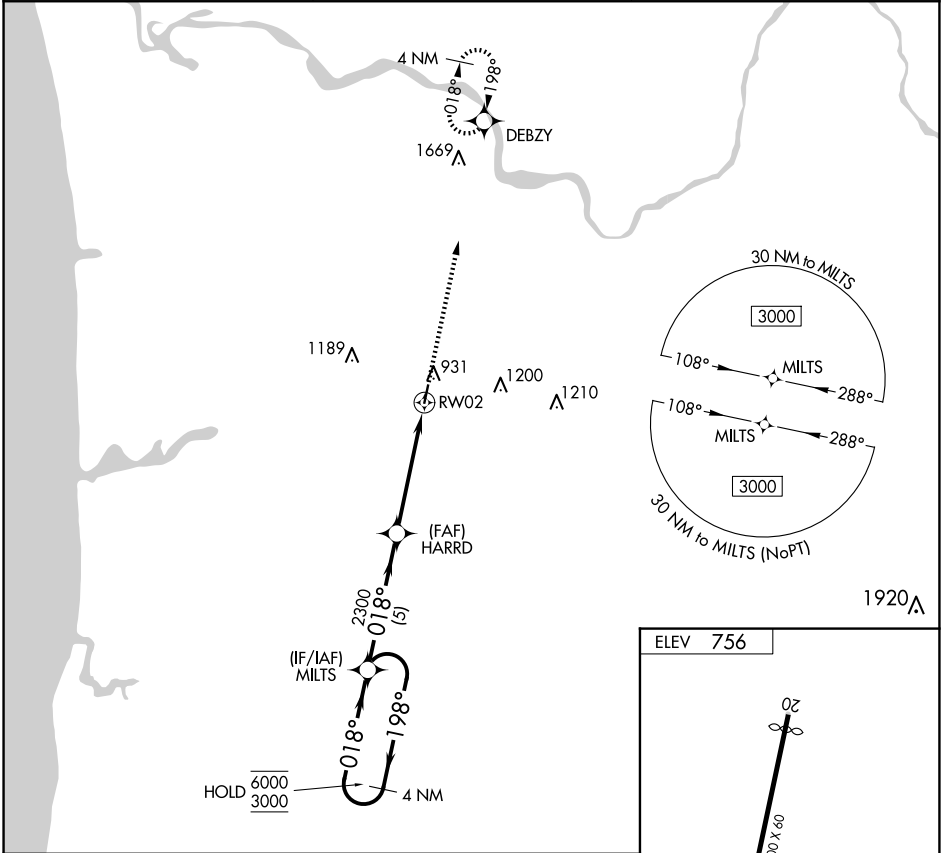
RNP APCH - GPS.

NA

Procedure NA at night. Circling NA west of Rwy 2-20.  
Rwy 2 and 20 helicopter visibility reduction below 1 SM NA.  
Use BIV altimeter setting.

MISSED APPROACH:  
Climb to 3000 direct  
DEBZY and hold.

BIV ASOS-3 <b>119.025</b>	GREAT LAKES APP CON <b>128.4 257.6</b>	CTAF <b>122.90 0</b>
------------------------------	---	-------------------------



4 NM Holding Pattern

MILTS

HARRD

3000 DEBZY

6000 ← 198°

3000 → 018°

018°

3.00° TCH 40

2300

RW02

5 NM

4.8 NM

CATEGORY	A	B	C	D
CIRCLING	1320-1 564 (600-2)	1380-1 624 (700-1)	NA	

ELEV 756

20

3800 X 60

0.11% UP

2

018°

URL Rwys 2 and 20 0

EC-1, 07 AUG 2025 to 04 SEP 2025

EC-1, 07 AUG 2025 to 04 SEP 2025