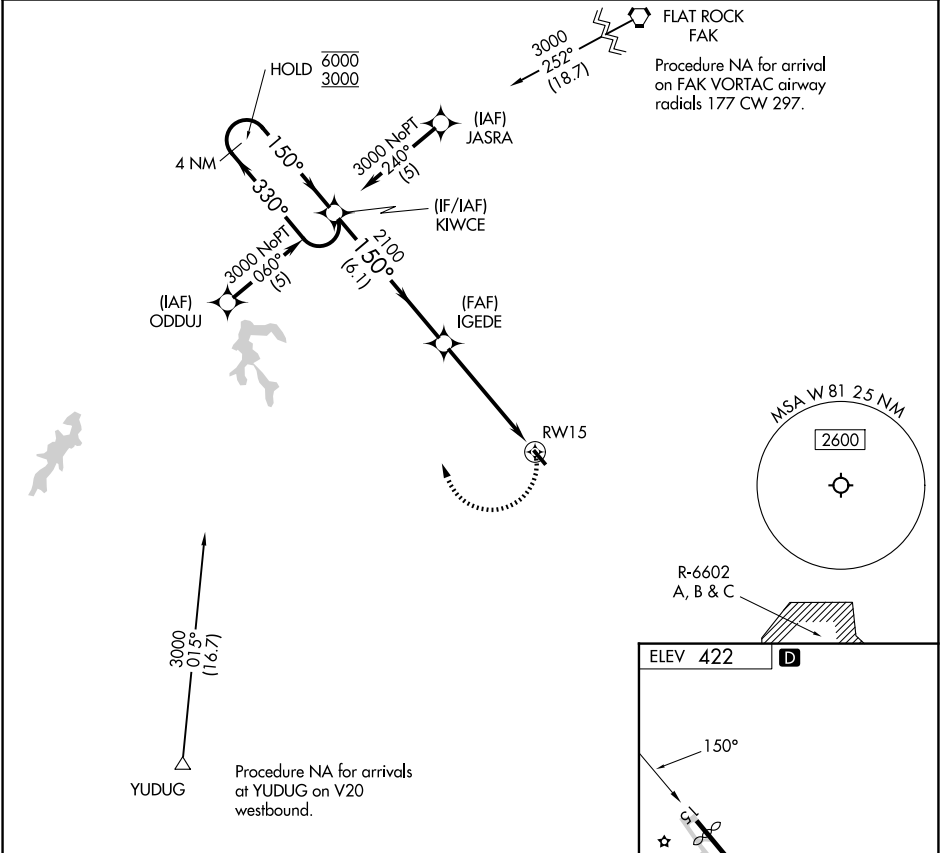


APP CRS	Rwy Ldg	N/A
150°	TDZE	N/A
	Apt Elev	422

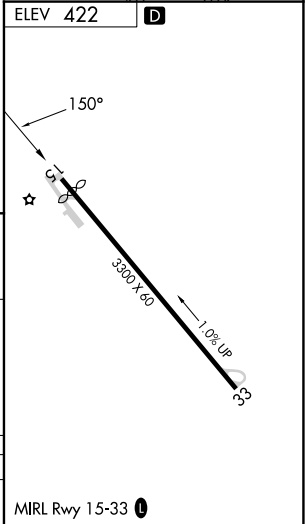
RNAV (GPS)-A
CREWE MUNI (W81)

RNP APCH - GPS.	MISSED APPROACH: Climbing right turn to 3000 direct KIWCCE and hold.
▼ Procedure NA at night. ▲ Rwy 15 helicopter visibility reduction below 1 SM NA.	

AWOS-3 119.05	WASHINGTON CENTER 118.75 377.1	UNICOM 122.8 (CTAF) 0
------------------	-----------------------------------	--------------------------



4 NM Holding Pattern			Visual Segment - Obstacles.		3000	KIWCCE
<div><div>6000</div><div>3000</div></div> <div>← 330°</div> <div>150° →</div>			KIWCCE	IGEDE	<div><div></div><div></div></div>	
			150°	2100	RW15	<div></div>
			6.1 NM	5.1 NM		
CATEGORY	A	B	C	D		
CIRCLING	1420-3	998 (1000-3)	NA			



NE-3, 07 AUG 2025 to 04 SEP 2025

NE-3, 07 AUG 2025 to 04 SEP 2025