

| | | |
|---------|----------|-----|
| APP CRS | Rwy Ldg | N/A |
| 034° | TDZE | N/A |
| | Apt Elev | 526 |

RNAV (GPS)-A

LUNENBURG COUNTY (W31)

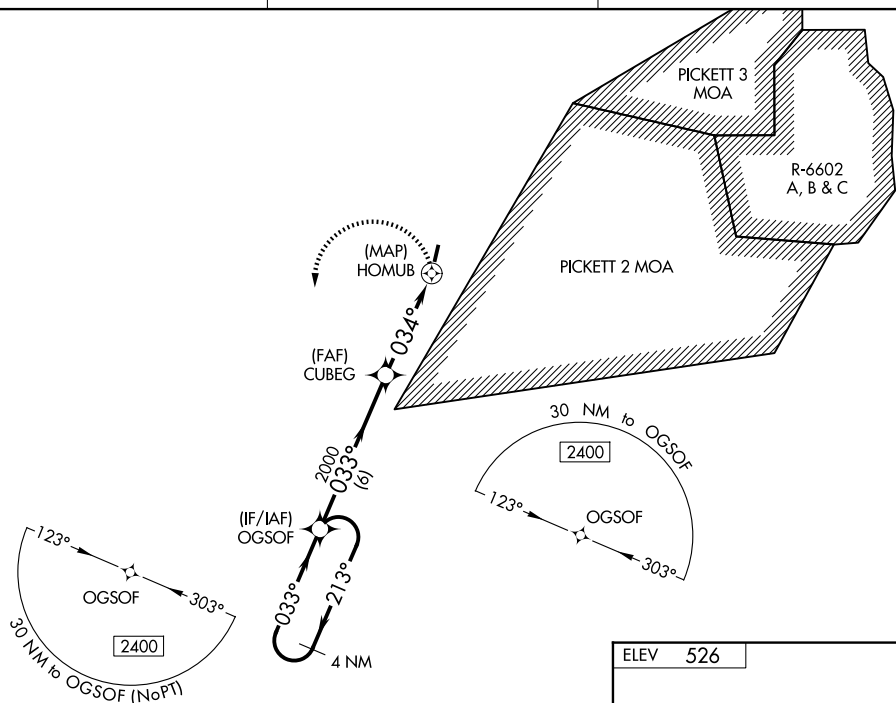
T Helicopter visibility reduction below 1 SM NA.
A DME/DME RNP-0.3 NA. Procedure NA at night.
 When local altimeter setting not received, use Blackstone altimeter setting and increase all MDA 60 feet.

MISSED APPROACH: Climbing left turn to 2400 direct OGSO and hold.

AWOS-3
123,875

WASHINGTON CENTER
118.75 377.1

UNICOM
122.7 (CTAF)



4 NM
Holding Pattern

OGSOF

| | |
|------|-------|
| 2400 | OGSOF |
|------|-------|

| CATEGORY | A | B | C | D |
|----------|-----------------------|-----------------------|----|---|
| CIRCLING | 1000-1 474 (500-1) | 1080-1 554 (600-1) | NA | |

KENBRIDGE, VIRGINIA
Orig 02MAR17

36°58'N-78°11'W

LUNENBURG COUNTY (W31)
RNAV (GPS)-A

NE-3, 07 AUG 2025 to 04 SEP 2025

