

WAAS

CH **90130**

W36A

APP CRS

002°

Rwy Idg

4000

TDZE

904

Apt Elev

917

RNAV (GPS) RWY 36

ELDON MODEL AIRPARK (H79)

RNP APCH.

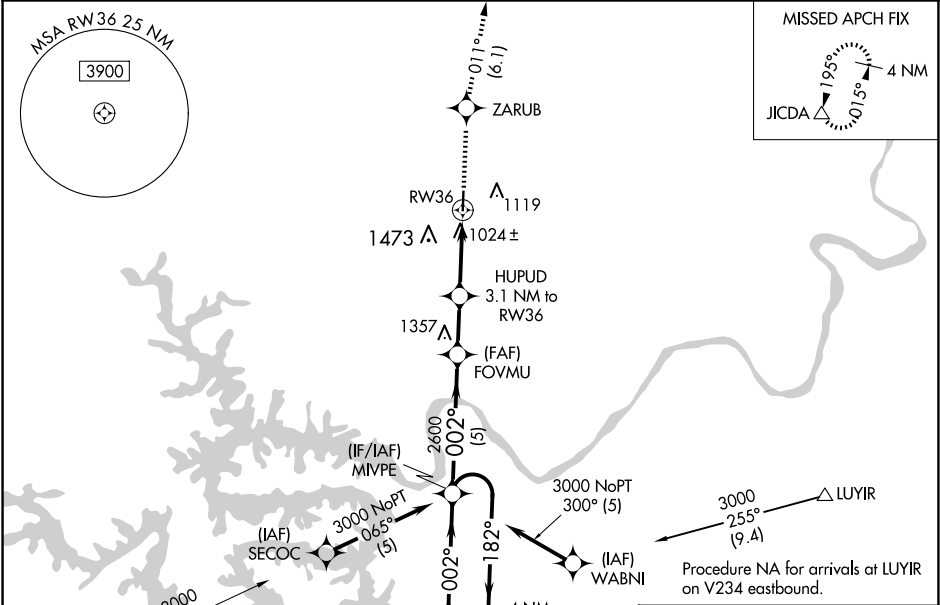
▼

NA

Rwy 36 helicopter visibility reduction below ¾ SM NA. Use Kaiser/Lake Ozark altimeter setting, when not received use Fort Leonard Wood altimeter setting and increase all MDA 100 feet; increase LP Cat C visibility ½ SM, increase LNAV Cat C and Circling Cats B/C visibility ¼ SM.

MISSED APPROACH: Climb to 3100 direct ZARUB and on track 011° to JICDA and hold.

AIZ AWOS-3PT 135.325	MIZZU APP CON 124.1 353.925	UNICOM 122.8 (CTAF) 0
--------------------------------	---------------------------------------	---------------------------------



ELEV 917

TDZE 904

MIRL Rwy 18-36 0

REIL Rws 18 and 36 0

4 NM Holding Pattern	VGSI and descent angles not coincident (VGSI Angle 4.00/TCH 39).	3100	ZARUB	JICDA
MIVPE	FOVMU	HUPUD 3.1 NM to RW36	tr 011°	△
6000 3000	182° 002°	002°	3.00° TCH 40	RW36
2600	1920	5 NM	2.1 NM	3.1 NM

CATEGORY	A	B	C	D
LP MDA	1320-1	416 (500-1)	1320-1½ 416 (500-1½)	NA
LNAV MDA	1440-1	536 (600-1)	1440-1½ 536 (600-1½)	NA
CIRCLING	1520-1 603 (700-1)	1820-1¼ 903 (1000-1¼)	1820-2¾ 903 (1000-2¾)	NA

81

4000 X 75

0.3% UP

36

002°