

WAAS CH 42619 W36A	APP CRS 003°	Rwy Idg 4600 TDZE 3318 Apt Elev 3326
--	------------------------	---

RNAV (GPS) RWY 36

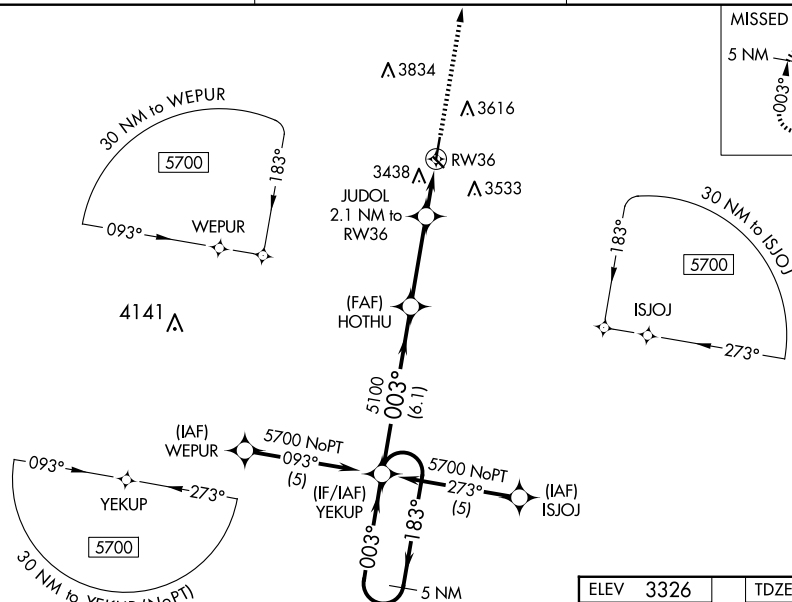
SYRACUSE-HAMILTON COUNTY MUNI (3K3)

RNP APCH-GPS.

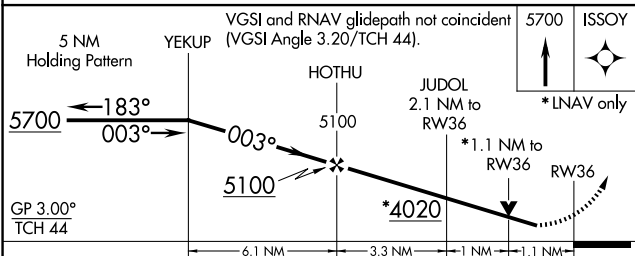
V Baro-VNAV NA when using Lamar altimeter setting. For uncompensated Baro-VNAV systems, LNAV/VNAV NA below -21°C (-5°F) or above 54°C (130°F). Helicopter visibility reduction below ¾ SM NA. Circling to RWY 13-31 NA at night. VDP NA with Lamar altimeter setting. When local altimeter setting not received, use Lamar altimeter setting: increase LPV DA to 3723 feet and all visibilities ½ SM; increase LNAV/VNAV DA to 3932 feet and all visibilities ¾ SM; increase all MDAs 160 feet and visibility Circling Cat A/B ¼ SM and LNAV Cat C and Circling Cat C ½ SM.

MISSED APPROACH:
Climb to 5700 direct
ISSOY and hold.

AWOS-3PT 119.975	DENVER CENTER 133.4 377.175	UNICOM 122.8 (CTAF) 0
----------------------------	---------------------------------------	---------------------------------



ELEV 3326	TDZE 3318
MIRL Rwy 13-31 and 18-36 L	



CATEGORY	A	B	C	D
LPV DA	3569-1 251 (300-1)			NA
LNAV/ VNAV DA	3778-1 $\frac{3}{4}$ 460 (500-1 $\frac{3}{4}$)			NA
LNAV MDA	3740-1 422 (500-1)		3740-1 $\frac{1}{4}$ 422 (500-1 $\frac{1}{4}$)	NA
CIRCLING	3980-1 654 (700-1)		4200-2 $\frac{1}{2}$ 874 (900-2 $\frac{1}{2}$)	NA

