

WAAS CH 77619 W18A	APP CRS 183°	Rwy Idg TDZE 3326 Apt Elev 3326
--	------------------------	---

RNAV (GPS) RWY 18

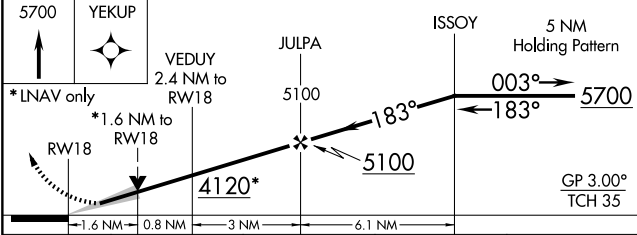
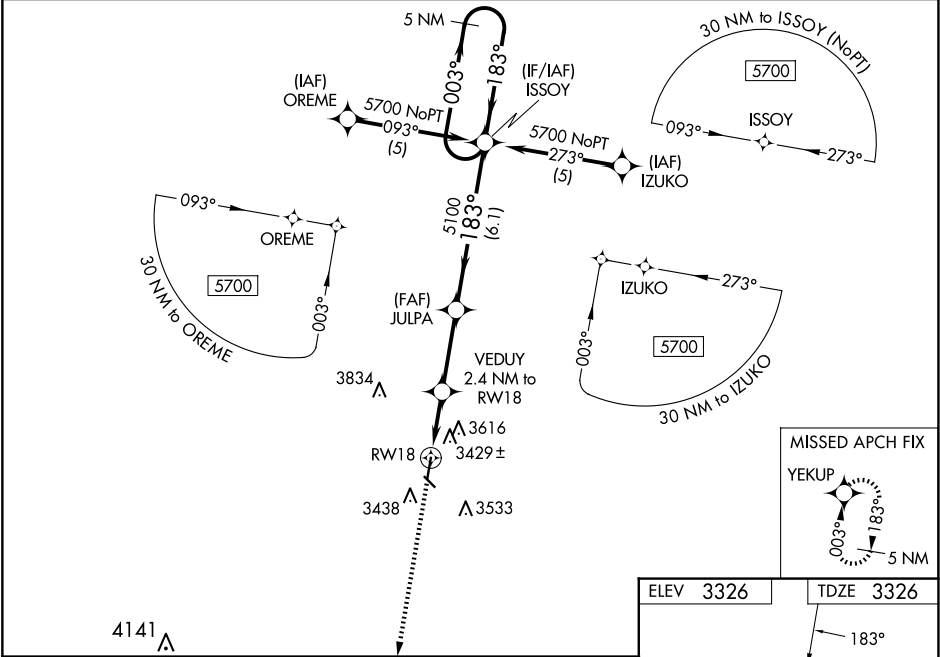
SYRACUSE-HAMILTON COUNTY MUNI (3K3)

RNP APCH-GPS.

Baro-VNAV NA when using Lamar altimeter setting. For uncompensated Baro-VNAV systems, LNAV/VNAV NA below -21°C (-5°F) or above 54°C (130°F). When local altimeter setting not received, use Lamar altimeter setting; increase LPV DA to 3730 feet and all visibilities ½ SM; increase LNAV/VNAV DA to 4093 feet and all visibilities ¾ SM; increase all MDAs 160 feet and visibility Circling Cat A/B ½ SM and LNAV Cat C and Circling Cat C ½ SM. VDP NA when using Lamar altimeter setting. Circling to Rwy 13/31 NA at night.

MISSED APPROACH:
Climb to 5700 direct
YEKUP and hold.

AWOS-3PT 119.975	DENVER CENTER 133.4 377.175	UNICOM 122.8 (CTAF)
----------------------------	---------------------------------------	-------------------------------



CATEGORY	A	B	C	D
LPV DA	3576-1	250 (300-1)		NA
LNAV/VNAV DA	3939-2¼	613 (700-2¼)		NA
LNAV MDA	3860-1	534 (600-1)	3860-1½ 534 (600-1½)	NA
CIRCLING	3980-1	654 (700-1)	4200-2½ 874 (900-2½)	NA

