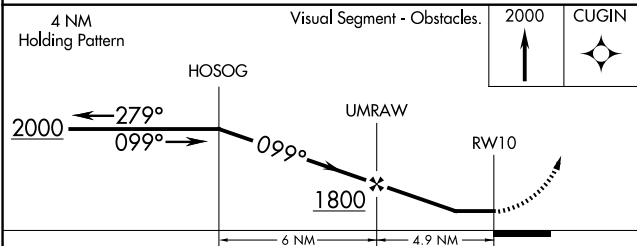
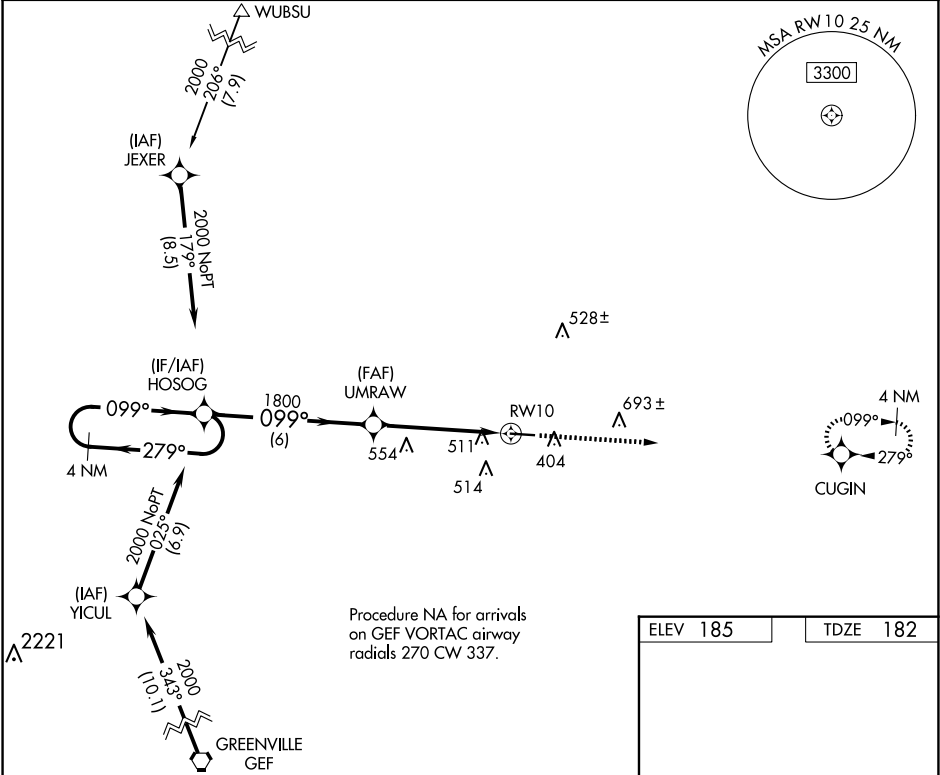


WAAS CH 42734 W10A	APP CRS 099°	Rwy Ldg TDZE 182 Apt Elev 185
--	------------------------	---

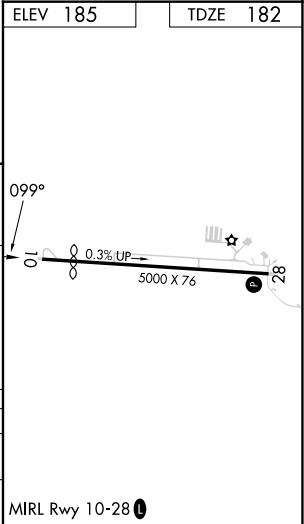
RNAV (GPS) RWY 10
QUITMAN BROOKS COUNTY (4J5)

RNP APCH. ▼ ▲NA	Procedure NA at night. Rwy 10 helicopter visibility reduction below 1 SM NA. Use Valdosta altimeter setting; when not received, use Thomasville altimeter setting and increase all MDA 20 feet; increase LP Cat C visibility 1/8 SM.	MISSED APPROACH: Climb to 2000 direct CUGIN and hold.
-----------------------	---	--

VALDOSTA APP CON★ 126.6	CTAF 122.9 0
-----------------------------------	------------------------



CATEGORY	A	B	C	D
LP MDA	740-1	558 (600-1)	740-1 5/8 558 (600-1 5/8)	NA
LNAV MDA	820-1	638 (700-1)	820-1 7/8 638 (700-1 7/8)	NA



SE-4, 07 AUG 2025 to 04 SEP 2025

SE-4, 07 AUG 2025 to 04 SEP 2025