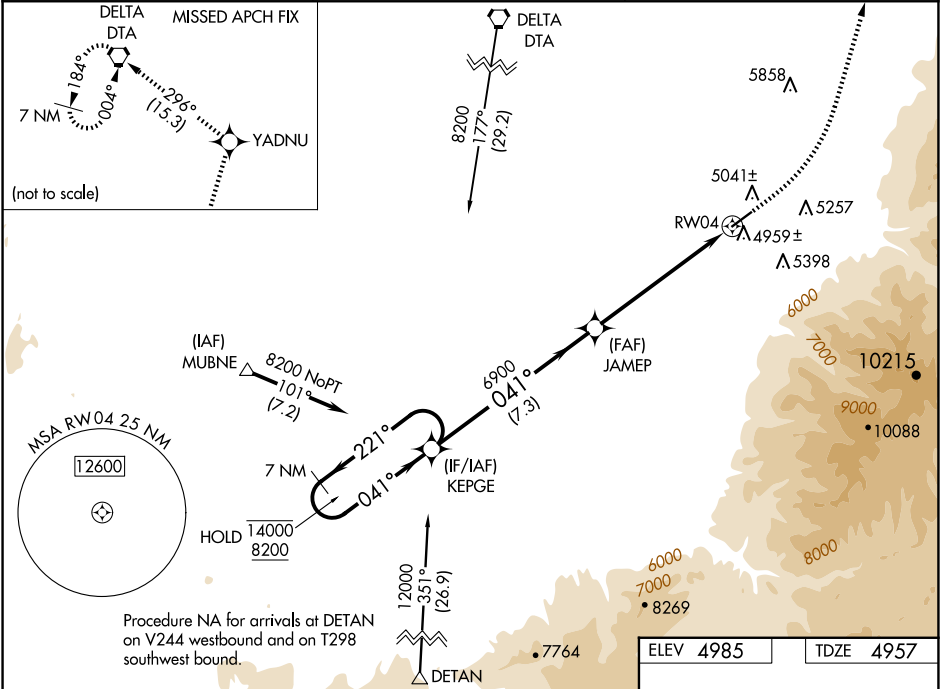


WAAS CH 42917 W04A	APP CRS 041°	Rwy Ldg TDZE Apt Elev 5040 4957 4985
--	------------------------	--

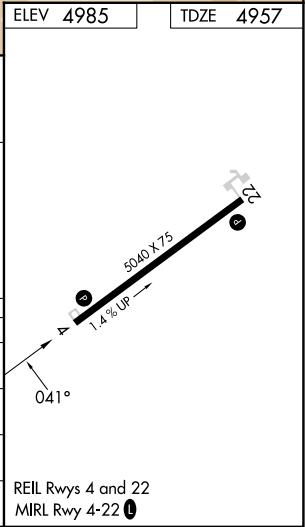
RNAV (GPS) RWY 4
FILLMORE MUNI (FOM)

RNP APCH. ▼ For uncompensated Baro-VNAV systems, procedure NA below -24°C or above 54°C. ▲	MISSED APPROACH: Climb to 5500 then climbing left turn to 9600 direct YADNU and on track 296° to DTA VORTAC and hold.
--	---

AWOS-3PT 133.775	SALT LAKE CITY CENTER 125.575 379.275	UNICOM 122.8 (CTAF) 0
----------------------------	---	---------------------------------



7 NM Holding Pattern		KEPGE	5500	9600	YADNU	tr 296°	DTA
14000 8200		← 221° → 041°	JAMEP	6900	*1.5 NM to RWY 04	RWY 04	
GP 3.00° TCH 30							
		7.3 NM	4.7 NM	1.5 NM			
CATEGORY	A	B	C	D			
LPV DA	5214-1	257 (300-1)		NA			
LNNAV/VNAV DA	5315-1	358 (400-1)		NA			
LNNAV MDA	5420-1	463 (500-1)	5420-1 3/8 463 (500-1 3/8)	NA			
CIRCLING	5620-1	635 (700-1)	6200-3 1215 (1300-3)	NA			



SW-4, 07 AUG 2025 to 04 SEP 2025

SW-4, 07 AUG 2025 to 04 SEP 2025