

APP CRS
207°

Rwy Ldg
TDZE
Apt Elev

5040
4985
4985

RNAV (GPS) RWY 22

FILLMORE MUNI (FOM)

RNP APCH.

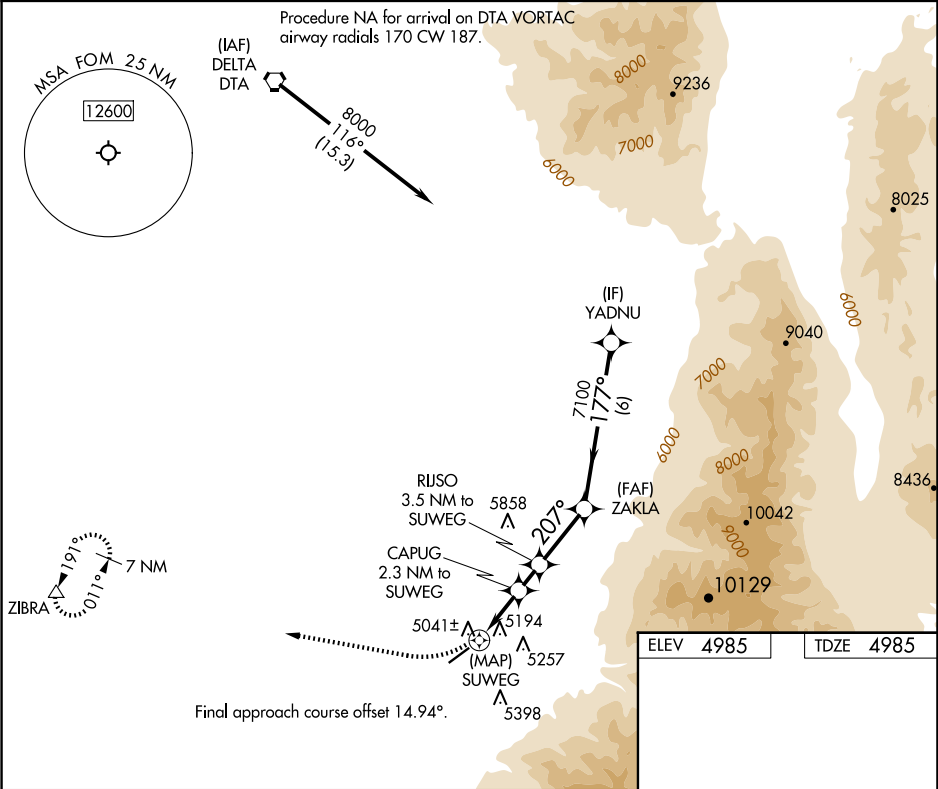
▼

▲

Rwy 22 helicopter visibility reduction below ¾ SM NA.

MISSED APPROACH: Climbing right turn to 9600 direct ZIBRA and hold, continue climb-in-hold to 9600.

AWOS-3PT 133.775	SALT LAKE CITY CENTER 125.575 379.275	UNICOM 122.8 (CTAF) 1
---------------------	--	--------------------------



9600	ZIBRA	VGSI and descent angles not coincident (VGSI Angle 3.00/TCH 35).			
CATEGORY	A	B	C	D	
RNAV MDA	5500-1	515 (600-1)	5500-1 ³ / ₈ 515 (600-1 ³ / ₈)	NA	
CIRCLING	5620-1	635 (700-1)	6200-3 1215 (1300-3)	NA	

