

WAAS CH 66031 W09A	APP CRS 095°	Rwy Idg TDZE Apt Elev	4403 2033 2037
--	------------------------	-----------------------------	---

RNAV (GPS) RWY 9

POPLAR MUNI (PO1)

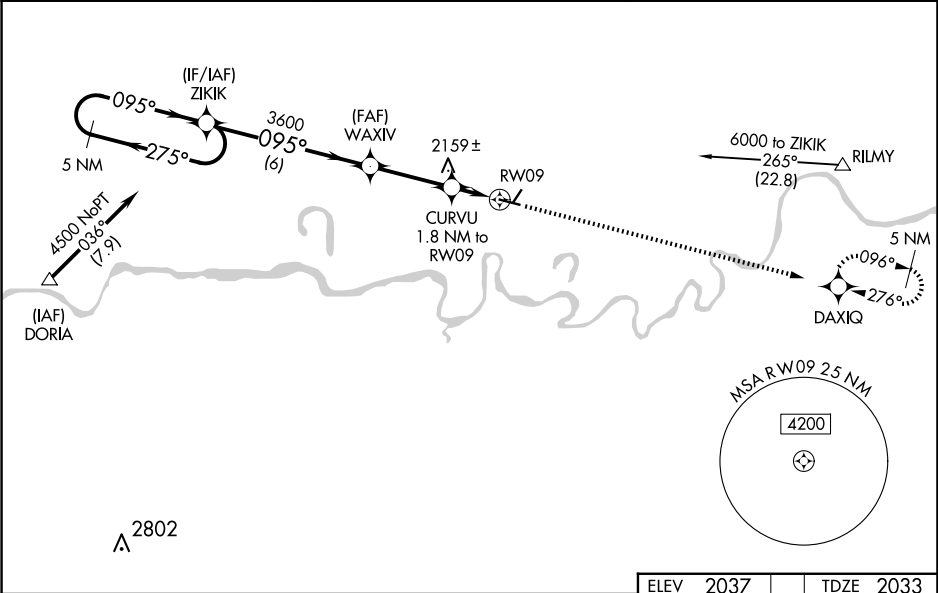
▼

NA

For uncompensated Baro-VNAV systems, LNAV/VNAV NA below -19°C (-2°F) or above 54°C (130°F). DME/DME RNP- 0.3 NA. Baro-VNAV and VDP NA with Wolf Point altimeter setting. When local altimeter not received, use Wolf Point altimeter setting: increase LPV DA to 2279, LNAV/VNAV DA to 2329; increase all MDAs 60 feet and LNAV Cat C/D visibility ¼ SM and Circling Cat C/D visibility ¼ SM. Helicopter visibility reduction below 1 SM not authorized. Circling NA to Rwy 2/20.

MISSED APPROACH: Climb to 4500 direct DAXIQ and hold.

AWOS-3PT 135.325	SALT LAKE CITY CENTER 126.85 305.2	UNICOM 122.8 (CTAF) 0
----------------------------	--	---------------------------------



5 NM Holding Pattern		VGSI and RNAV glidepath not coincident (VGSI Angle 3.00/TCH 24).		ELEV 4500	DAXIQ
GP 3.00° TCH 40		*LNAV Only			
ZIKIK		WAXIV		CURVU	
4500		3600		1.8 NM to RW09	
275°		095°		*1.2 NM to RW09	
095°		3600		RW09	
6 NM		3 NM		0.6	
1.2 NM					
CATEGORY	A	B	C	D	
LPV DA	2233-1		200 (200-1)		
LNAV/VNAV DA	2283-1		250 (300-1)		
LNAV MDA	2420-1	387 (400-1)	2420-1⅛	387 (400-1⅛)	
CIRCLING	2560-1 523 (600-1)	2600-1 563 (600-1)	2600-1½ 563 (600-½)	2740-2¼ 703 (800-2¼)	

