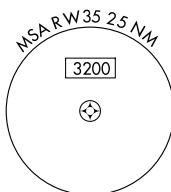


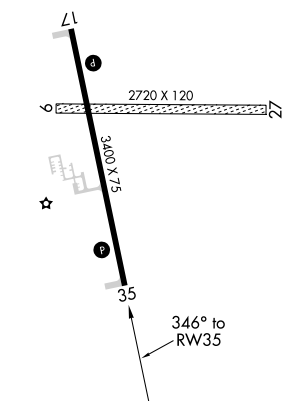
RNAV (GPS) RWY 35

MAHNOMEN COUNTY (3N8)

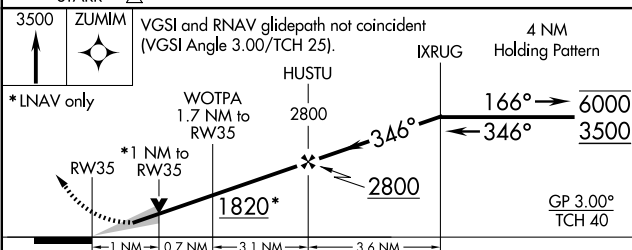
MISSED APPROACH:
Climb to 3500 direct
ZUMIM and hold.


CTAF
122.9 L

MIRL Rwy 17-35 **L**
REIL Rwy 17 and 35 **L**



Procedure NA for arrivals at STARR on V510 southeast bound.



CATEGORY		A	B	C	D
LPV	DA	1496-1	250 (300-1)		NA
LNAV/ VNAV	DA	1496-1	250 (300-1)		NA
LNAV	MDA	1600-1	354 (400-1)		NA
 CIRCLING		1640-1 394 (400-1)	1700-1 454 (500-1)		NA