

RNAV (GPS) RWY 17

MISSED APPROACH:
Climb to 3500 direct
IXRUG and hold.

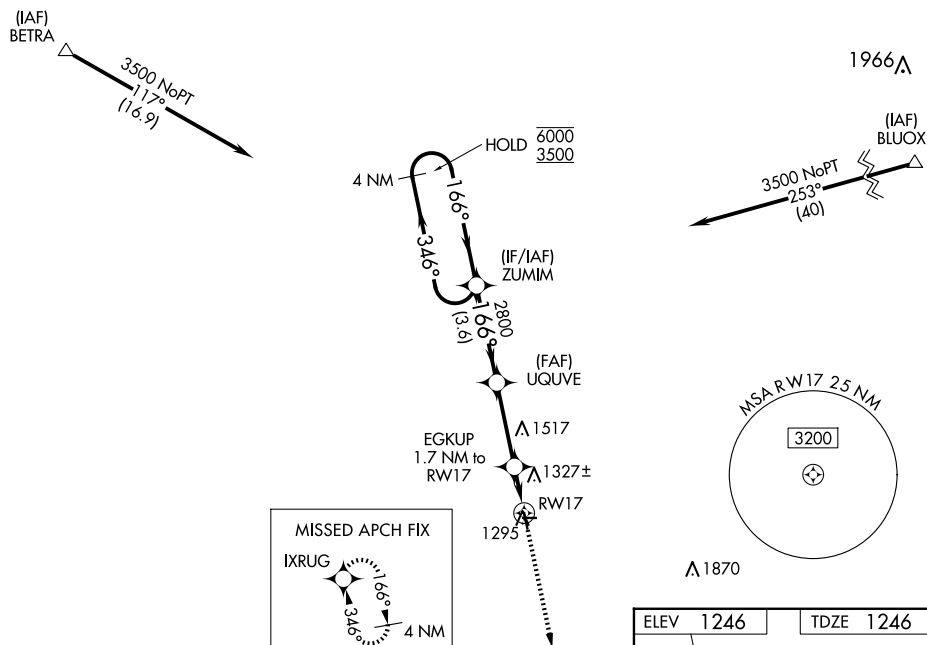

CTAF
122.9 **L**

Diagram illustrating a VOR/DME station (ZUMIM) with a non-parallel glidepath. The diagram shows the station's location, the glidepath angle (VGS Angle 3.00/TCH 25), and the distance to the runway (RW17). Key waypoints include UQVUE (2800 feet) and EKGUP (1.7 NM to RW17). The diagram also shows the distance from the station to RW17 (0.7 NM) and the distance from the station to the runway (1 NM).

CATEGORY		A	B	C	D
LPV	DA	1496-1	250 (300-1)	NA	
LNAV/ VNAV	DA	1496-1	250 (300-1)	NA	
LNAV	MDA	1580-1	334 (400-1)	NA	
 CIRCLING		1640-1 394 (400-1)	1700-1 454 (500-1)	NA	

