

WAAS CH 40232 W36A	APP CRS 356°	Rwy Ldg TDZE 1999 Apt Elev 1999
----------------------------------------	------------------------	-----------------------------------------------------

RNAV (GPS) RWY 36

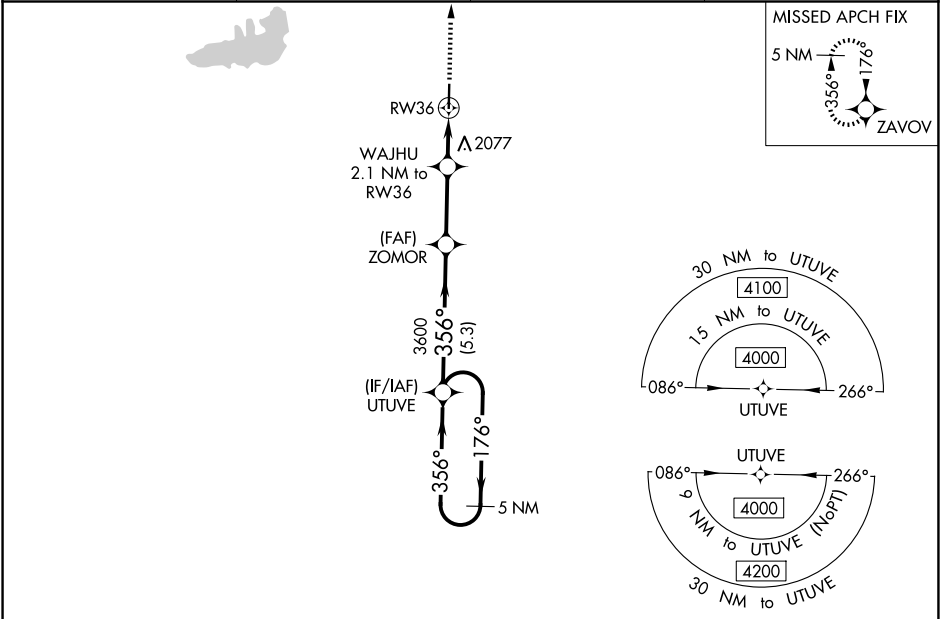
ROOKS COUNTY RGNL (RCP)

NA

Baro-VNAV NA. Use Hill City alimeter setting; when not received, use Hays Rgnl alimeter setting. Circling NA west of Rwy 18-36.
DME/DME RNP-0.3 NA.

MISSED APPROACH: Climb to 6000 direct ZAVOV and hold, continue climb-in-hold to 6000.

AWOS-3PT 120.075	HLC ASOS 118.425	DENVER CENTER 132.7 226.675	CTAF 122.9
----------------------------	----------------------------	---------------------------------------	----------------------



ELEV 1999

TDZE 1999

MIRL Rwy 18-36

REIL Rwys 18 and 36

5 NM Holding Pattern

UTVU

3600

ZOMOR

Wajuhu 2.1 NM to RW36

RW36

GP 3.00° TCH 40

4000

176°

356°

356°

3600

*2680

5.3 NM

2.8 NM

2.1 NM

6000

ZAVOV

*LNAV only.

CATEGORY	A	B	C	D
LPV DA	2290-1 291 (300-1)			NA
LNAV/VNAV DA	2340-1 341 (400-1)			NA
LNAV MDA	2420-1 421 (500-1)		2420-1 421 (500-1)	NA
CIRCLING	2460-1 461 (500-1)	2480-1 481 (500-1)	2500-1 501 (600-1)	NA

81

5000 X 75

36

356°