

WAAS CH 82432 W18A	APP CRS 176°	Rwy Ldg TDZE 1999 Apt Elev 1999
--	------------------------	---

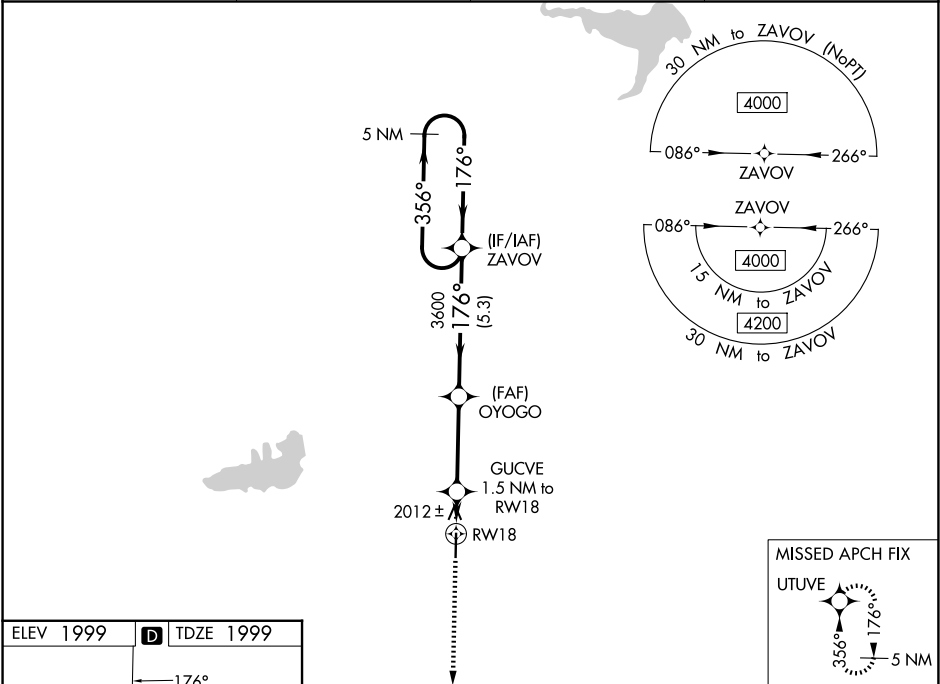
RNAV (GPS) RWY 18

ROOKS COUNTY RGNL (RCP)

Baro-VNAV NA. Use Hill City altimeter setting; when not received, use Hays altimeter setting. Circling NA west of Rwy 18-36.
DME/DME RNP-0.3 NA.

MISSED APPROACH: Climb to 6000 direct UTUVE and hold, continue climb-in-hold to 6000.

AWOS-3PT 120.075	HLC ASOS 118.425	DENVER CENTER 132.7 226.675	CTAF 122.9
----------------------------	----------------------------	---------------------------------------	----------------------



ELEV 1999 **D** TDZE 1999

176°

81

5000 X 75

36

MIRL Rwy 18-36 **1**

REIL Rws 18 and 36 **1**

6000	UTUVE	OYOGO	ZAVOV	5 NM Holding Pattern
*LNAV only.	GUCVE 1.5 NM to RW18	3600	176°	3600
RW18	2500*	1.5 NM	3.4 NM	5.3 NM
GP 3.00°	TCH 40			
CATEGORY	A	B	C	D
LPV DA	2290-1	291 (300-1)		NA
LNAV/VNAV DA	2340-1½	341 (400-1½)		NA
LNAV MDA	2360-1	361 (400-1)		NA
CIRCLING	2460-1 461 (500-1)	2480-1 481 (500-1)	2500-1½ 501 (600-1½)	NA