

WAAS CH <b>93817</b> <b>W34A</b>	APP CRS <b>342°</b>	Rwy Idg <b>10000</b> TDZE <b>62</b> Apt Elev <b>69</b>
--	------------------------	--

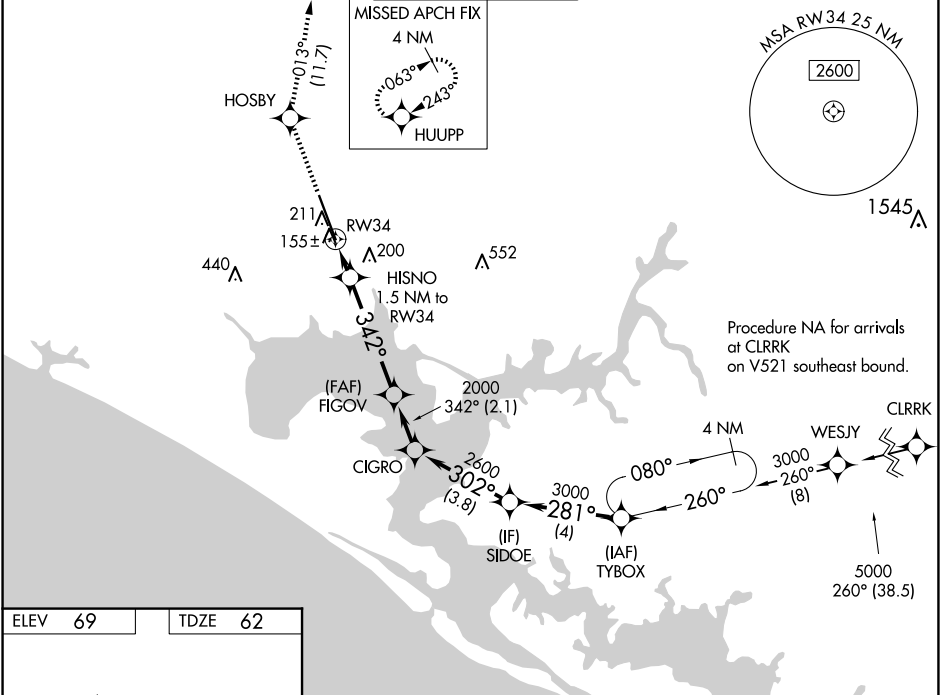
RNAV (GPS) RWY 34

NORTHWEST FLORIDA BEACHES INTL (ECP)

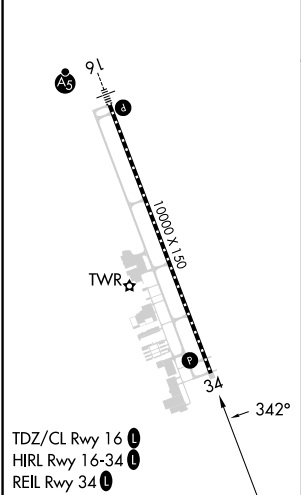
For uncompensated Baro-VNAV systems, LNAV/VNAV NA below -15°C (5°F) or above 54°C (130°F). DME/DME RNP-0.3 NA. When local altimeter setting not received, use Destin altimeter setting and increase all DA 88 feet, increase all MDA 100 feet, increase LPV all Cats visibility ⅓ mile, increase LNAV/VNAV all Cats visibility ⅓ mile, and increase LNAV Cat C and D visibility ⅓ mile. Baro-VNAV and VDP NA with Destin altimeter setting.

MISSED APPROACH: Climb to 4000 direct HOSBY and on track 013° to HUUPP and hold, continue climb-in-hold to 4000.

ATIS <b>119.975</b>	TYNDALL APP CON ★ <b>125.2</b> (N above 5000')	PANAMA CITY TOWER★ <b>118.95</b> (CTAF) <b>0</b>	GND CON <b>121.65</b>	CLNC DEL <b>123.75</b>
------------------------	---	---	--------------------------	---------------------------



ELEV <b>69</b>	TDZE <b>62</b>
----------------	----------------



4000	HOSBY	tr 013°	HUUPP	VGSI and RNAV glidepath not coincident (VGSI Angle 3.00/TCH 86).	
*LNAV only.		HISNO 1.5 NM to RW34	FIGOV 2000	CIGRO	SIDOE
RW34		*0.9 NM to RW34	2000	2600	3000
0.9		0.6	4.4 NM	2.1 NM	3.8 NM
CATEGORY		A	B	C	D
LPV DA		262-3/4		200 (200-3/4)	
LNAV/VNAV DA		344-7/8		282 (300-7/8)	
LNAV MDA		420-1		358 (400-1)	
CIRCLING		520-1	451 (500-1)	520-1 1/2 451 (500-1 1/2)	620-2 551 (600-2)