

LOC/DME I-PUK <b>111.15</b> Chan <b>48</b> (Y)	APP CRS <b>162°</b>	Rwy Idg TDZE Apt Elev <b>10000</b> <b>69</b> <b>69</b>
--	------------------------	---

ILS or LOC RWY 16  
NORTHWEST FLORIDA BEACHES INTL (ECP)

DME required for procedure entry. DME required.

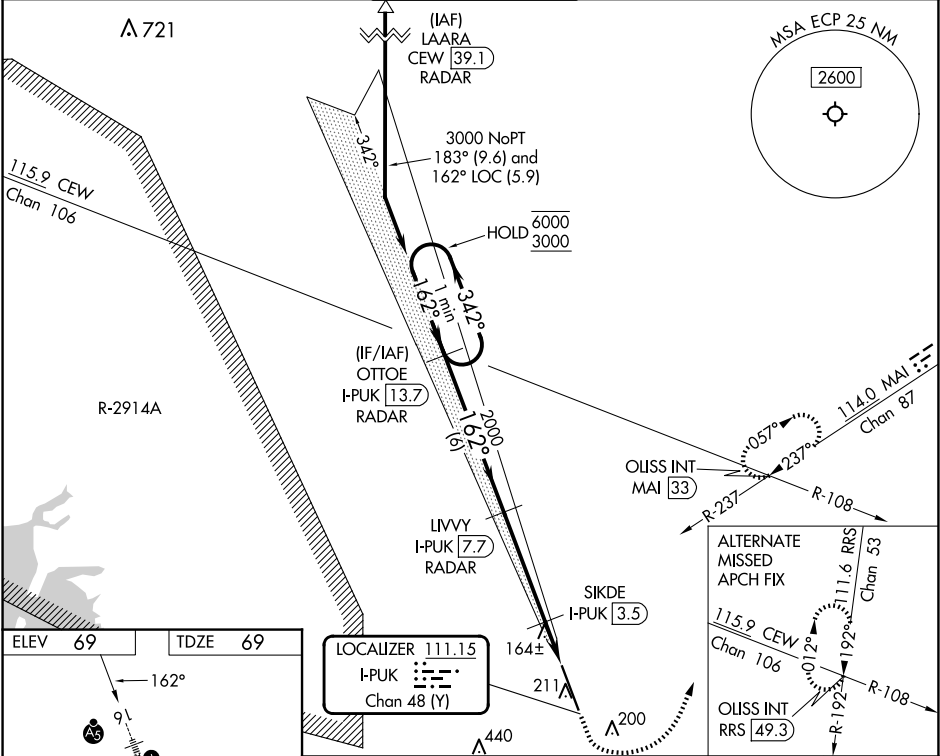
- ⚠ For inop ALS, increase S-LOC 16 Cat C/D visibility to RVR 5500.  
⚠ #RVR 1800 authorized with use of FD or AP or HUD to DA.

MALSR

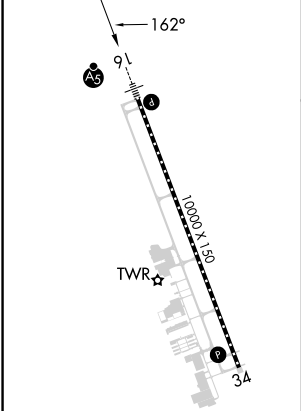


MISSED APPROACH: Climb to 600 then climbing left turn to 4000 on heading 025° and on MAI VORTAC R-237 to OLISS INT/MAI 33 DME and hold, continue climb-in-hold to 4000.

ATIS <b>119.975</b>	TYNDALL APP CON ★ <b>125.2</b> (N above 5000')	PANAMA CITY TOWER★ <b>118.95</b> (CTAF) <b>0</b>	GND CON <b>121.65</b>	CLNC DEL <b>123.75</b>
------------------------	---	---	--------------------------	---------------------------



ELEV <b>69</b>	TDZE <b>69</b>
----------------	----------------



TDZ/CL Rwy 16 **0**  
HIRL Rwy 16-34 **0**  
REIL Rwy 34 **0**

One Minute Holding Pattern		OTTOE I-PUK <u>13.7</u> RADAR		LIVVY I-PUK <u>7.7</u> RADAR		SIKDE I-PUK <u>3.5</u>		600 ↑		4000 hdg 025°		MAI R-237		OLISS INT	
6000 ← 342°		162° →		162° →		2000		2000		660					
GS 3.00° TCH 55		VGSI and ILS glidepath not coincident (VGSI Angle 3.00/TCH 72).													
		6 NM		4.2 NM		0.8 NM		0.9 NM							
CATEGORY		A		B		C		D							
S-ILS 16 #		269/24 200 (200-½)													
S-LOC 16		440/24		371 (400-½)		440/35		371 (400-¾)							
CIRCLING		520-1		451 (500-1)		520-1½ 451 (500-1½)		620-2 551 (600-2)							

SE-3, 07 AUG 2025 to 04 SEP 2025

SE-3, 07 AUG 2025 to 04 SEP 2025