

WAAS CH 50538 W16A	APP CRS 164°	Rwy ldg TDZE 1162 Apt Elev 1162
--	------------------------	---

RNAV (GPS) RWY 16

SISSETON MUNI (8D3)

⚠

NA

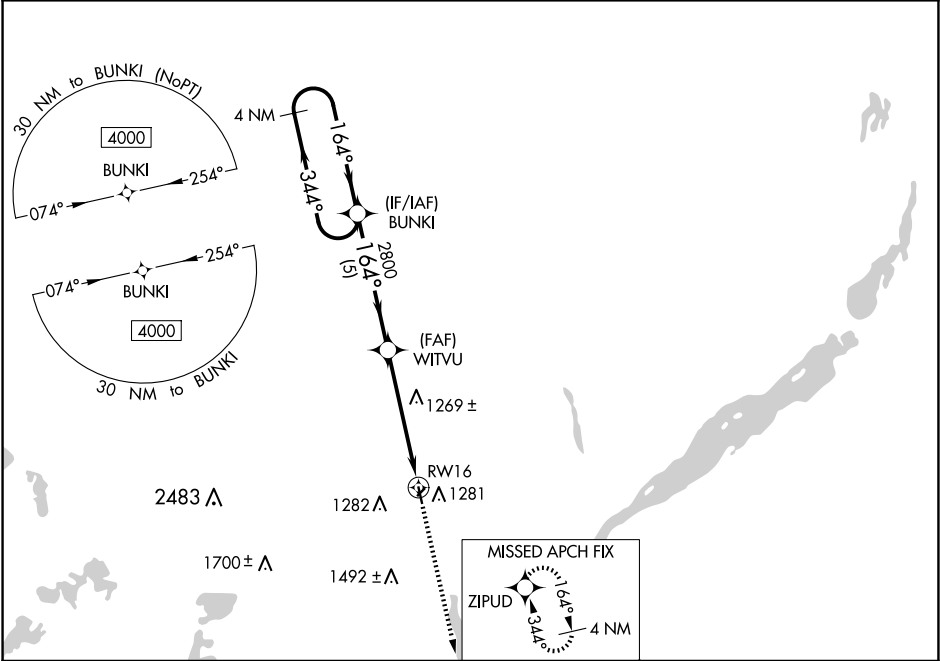
✈

NA

Circling NA to Rwy 4 and 22. Baro-VNAV NA. DME/DME RNP-0.3 NA. Helicopter visibility reduction below ¾ SM NA. Use Wheaton altimeter setting; when not received, use Ortonville altimeter setting and increase LPV DA to 1496 feet, LNAV/VNAV DA to 1516 feet and all MDA 20 feet. Increase LNAV/VNAV Cats A/B visibility ½ mile.

MISSED APPROACH: Climb to 4000 direct ZIPUD and hold, continue climb-in-hold to 4000.

ETH AWOS-3 118.775	MINNEAPOLIS CENTER 128.5 306.2	CTAF 122.90
------------------------------	--	-----------------------



4 NM Holding Pattern		VGSI and RNAV glidepath not coincident (VGSI Angle 3.00/TCH 30)		4000	ZIPUD	ELEV 1162	TDZE 1162
CATEGORY		A	B	C	D		
LPV DA		1478-1½	316 (400-1½)	NA			
LNAV/VNAV DA		1498-1½	336 (400-1½)	NA			
LNAV MDA		1600-1	438 (500-1)	NA			
CIRCLING		1660-1 498 (500-1)	1700-1 538 (600-1)	NA		MIRL Rwy 16-34	

NC-1, 07 AUG 2025 to 04 SEP 2025

NC-1, 07 AUG 2025 to 04 SEP 2025