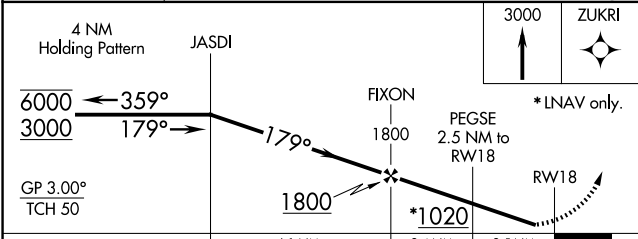
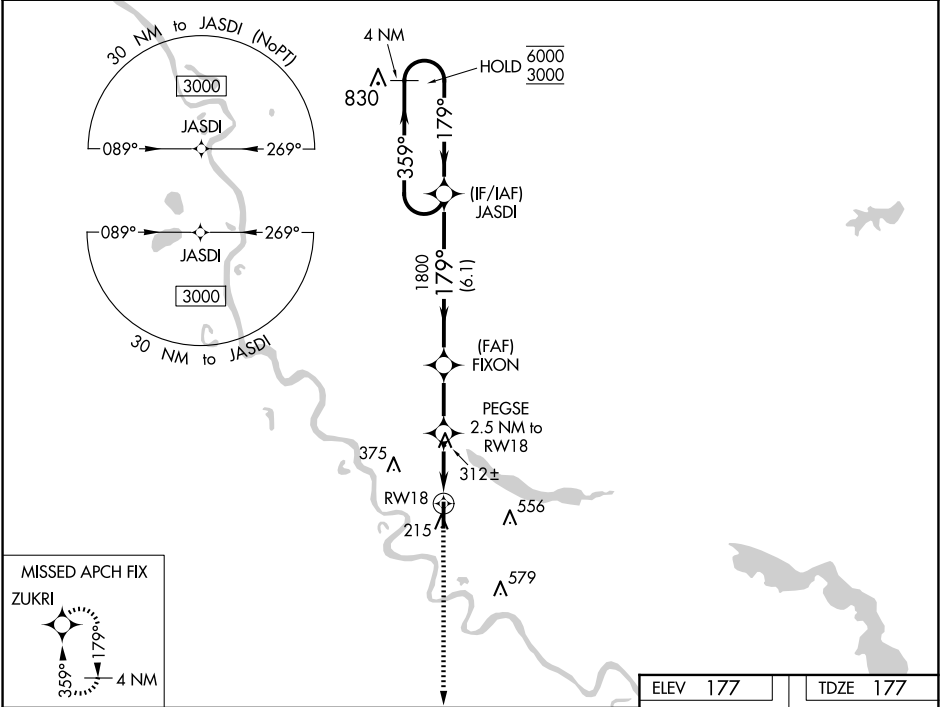


WAAS CH 93842 W18A	APP CRS 179°	Rwy Idg TDZE 177 Apt Elev 177	5002
----------------------------------------	------------------------	---------------------------------------------------	-------------

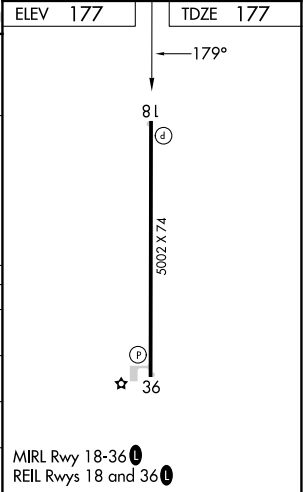
RNAV (GPS) RWY 18
THE RED RIVER (ØR7)

RNP APCH.	MISSED APPROACH: Climb to 3000 direct ZUKRI and hold, continue climb in hold to 3000.
▼ Rwy 18 helicopter visibility reduction below ¾ SM NA. Baro-VNAV NA. ▲ NA Use Natchitoches altimeter setting. Procedure NA at night.	

IER AWOS-3 119.025	POLK APP CON 132.05 254.8	CTAF 122.9 0
------------------------------	-------------------------------------	------------------------



CATEGORY	A	B	C	D
LPV DA	478-1	301 (400-1)		
LNAV/VNAV DA	632-1 3/8	455 (500-1 3/8)		
LNAV MDA	620-1	443 (500-1)	620-1 3/8	443 (500-1 3/8)
CIRCLING	660-1	483 (500-1)	920-2 1/4 743 (800-2 1/4)	940-2 1/2 763 (800-2 1/2)



SC-4, 07 AUG 2025 to 04 SEP 2025

SC-4, 07 AUG 2025 to 04 SEP 2025