

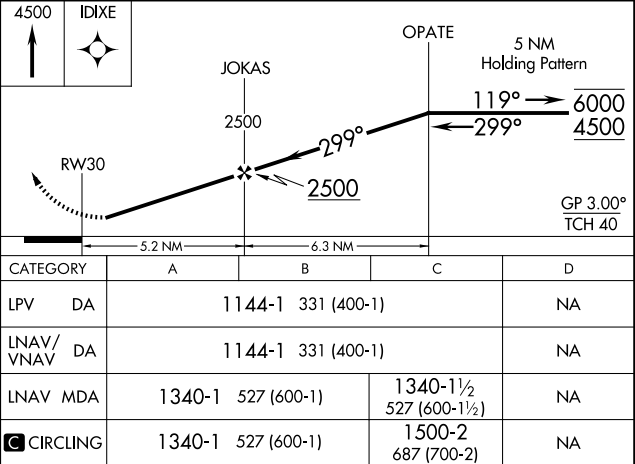
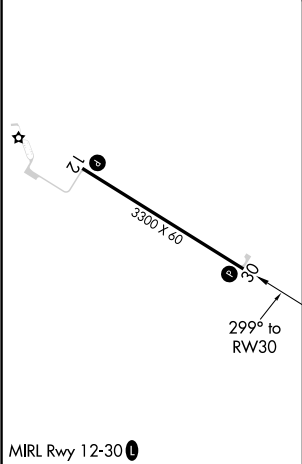
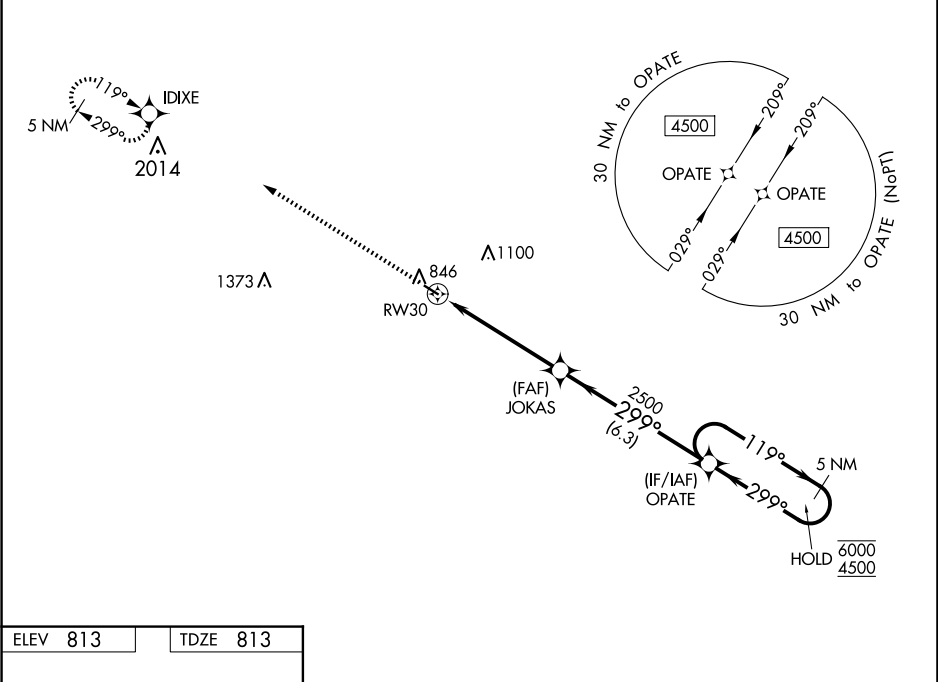
WAAS CH <b>86437</b> <b>W30A</b>	APP CRS <b>299°</b>	Rwy Idg <b>3300</b> TDZE <b>813</b> Apt Elev <b>813</b>
--	------------------------	---

RNAV (GPS) RWY 30

MEMPHIS MEML (Ø3D)

RNP APCH.	MISSED APPROACH: Climb to 4500 direct IDIXE and hold, continue climb-in-hold to 4500.
▼ Rwy 30 helicopter visibility reduction below ¾ SM NA. ▲ NA Baro-VNAV NA. Use Kirksville altimeter setting.	

IRK ASOS <b>121.125</b>	KANSAS CITY CENTER <b>126.225 317.775</b>	CTAF <b>122.90</b>
----------------------------	--	-----------------------



NC-3, 07 AUG 2025 to 04 SEP 2025

NC-3, 07 AUG 2025 to 04 SEP 2025