

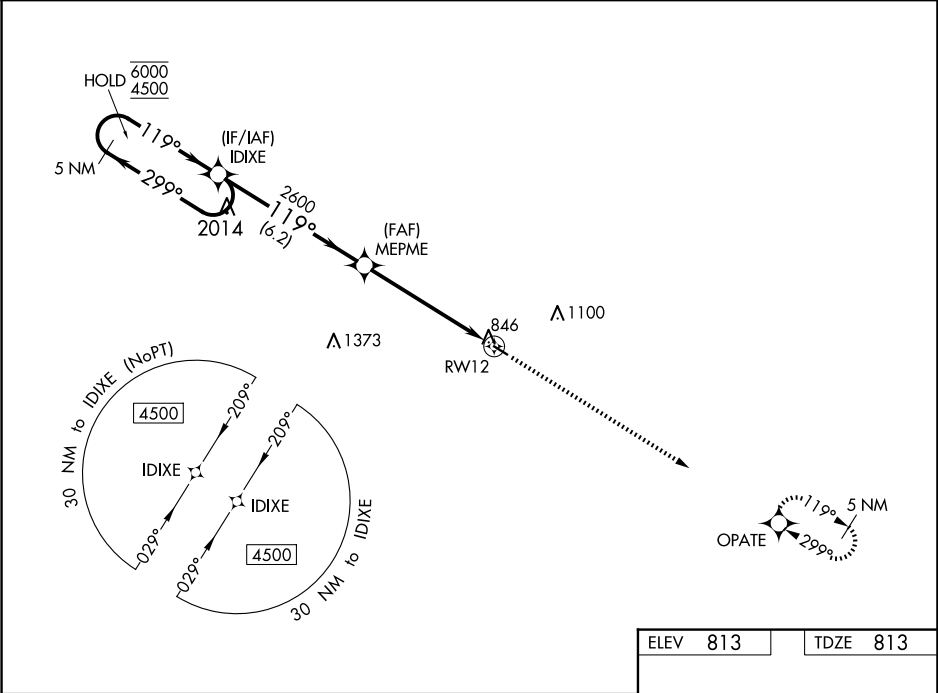
WAAS CH 93637 W12A	APP CRS 119°	Rwy Idg 3300 TDZE 813 Apt Elev 813
--	------------------------	---

RNAV (GPS) RWY 12

MEMPHIS MEML (Ø3D)

RNP APCH.	MISSED APPROACH: Climb to 4500 direct OPATE and hold, continue climb-in-hold to 4500.
▼ NA Rwy 12 helicopter visibility reduction below ¾ SM NA. Baro-VNAV NA. Use Kirksville altimeter setting.	

IRK ASOS 121.125	KANSAS CITY CENTER 126.225 317.775	CTAF 122.90
----------------------------	--	-----------------------



5 NM Holding Pattern

6000 ← 299°

4500 → 119°

GP 3.00°

TCH 40

IDIXE

MEPME

2600

2600

2600

6.2 NM

5.5 NM

RW12

4500

OPATE

119° to RWY12

3300 X 60

MIRL Rwy 12-30

CATEGORY	A	B	C	D
LPV DA	1144-1 331 (400-1)			NA
LNAV/VNAV DA	1144-1 331 (400-1)			NA
LNAV MDA	1360-1	547 (600-1)	1360-1⅜ 547 (600-1⅜)	NA
CIRCLING	1360-1	547 (600-1)	1500-2 687 (700-2)	NA