

WAAS CH 49246 W16A	APP CRS 157°	Rwy Idg TDZE 1729 Apt Elev 1730
--	------------------------	---

RNAV (GPS) RWY 16

WILDER (6E5)

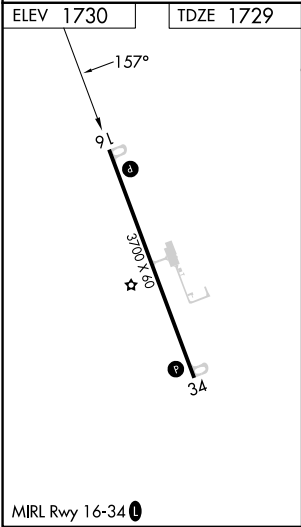
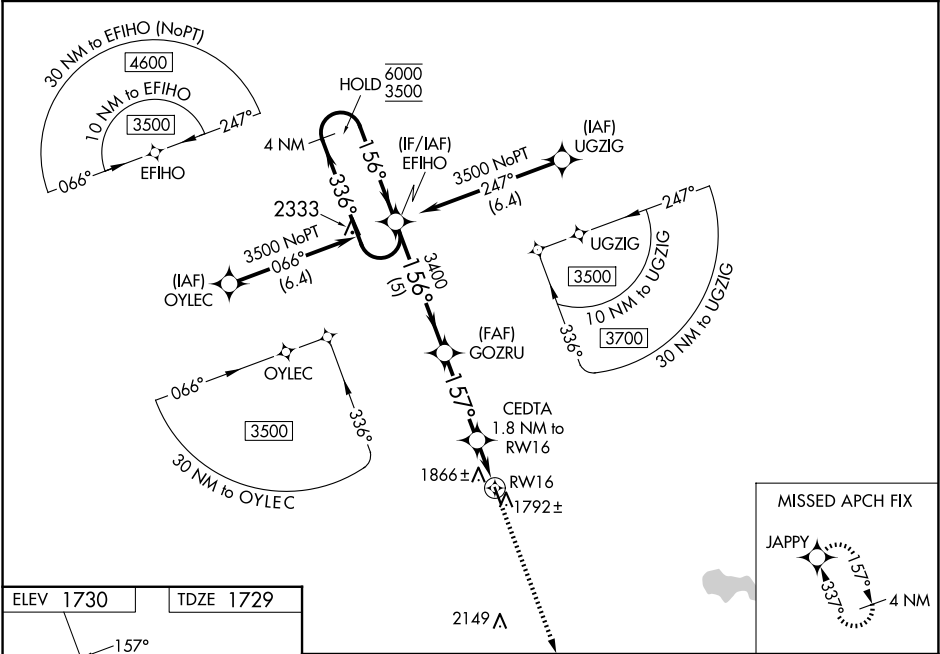
RNP APCH - GPS.

⚠

For uncompensated Baro-VNAV systems, LNAV/VNAV NA below -18°C or above 54°C. Rwy 16 helicopter visibility reduction below ¾ SM NA. Baro-VNAV and VDP NA when using MDS altimeter setting. When local altimeter setting not received, use MDS altimeter setting and increase LPV DA to 2055 feet; increase LNAV/VNAV DA to 2200 feet and all visibilities ½ SM. Increase all MDAs 80 feet.

MISSED APPROACH: Climb to 3600 direct JAPPY and hold.

AWOS-3P 118.15	MINNEAPOLIS CENTER 126.25 339.8	CTAF 122.90
--------------------------	---	-----------------------



<div>EFIHO</div> <div>4 NM Holding Pattern</div> <div>6000 ← 336°</div> <div>3500 → 156°</div> <div>GP 3.00°</div> <div>TCH 34</div>				<div>GOZRU</div> <div>3400</div> <div>156°</div> <div>3400</div> <div>157°</div> <div>2340</div> <div>5 NM</div> <div>3.3 NM</div> <div>0.7</div> <div>1.1 NM</div> <div>CEDTA 1.8 NM to RW16</div> <div>1.1 NM to RW16</div> <div>RW16</div>				<div>3600</div> <div>↑</div>	<div>JAPPY</div> <div>✦</div>
CATEGORY	A	B	C	D					
LPV DA	1979-1	250 (300-1)	NA						
LNAV/VNAV DA	2120-1½	391 (400-1½)	NA						
LNAV MDA	2120-1	391 (400-1)	NA						
CIRCLING	2180-1	2220-1	NA						
	450 (500-1)	490 (500-1)							