

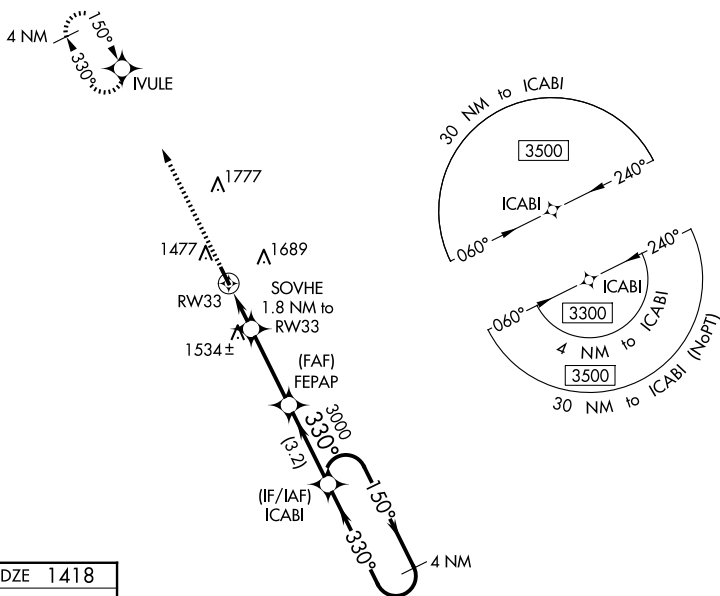
WAAS CH <b>62833</b> <b>W33A</b>	APP CRS <b>330°</b>	Rwy Ldg <b>3600</b> TDZE <b>1418</b> Apt Elev <b>1418</b>
--	------------------------	---

RNAV (GPS) RWY 33  
PARKSTON MUNI (8V3)

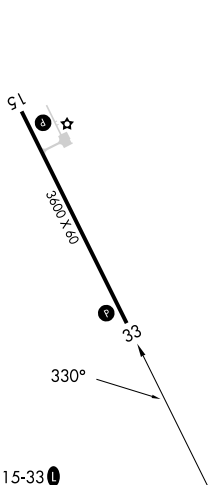
**NA** DME/DME RNP-0.3 NA. Use Mitchell altimeter setting; when not received, use Yankton altimeter setting and increase all DA 32 feet and all MDA 40 feet. Helicopter visibility reduction below  $\frac{3}{4}$  SM not authorized. Baro-VNAV NA.

**MISSED APPROACH:** Climb to 3300 direct IVULE and hold.

MHE ASOS <b>124.175</b>	MINNEAPOLIS CENTER <b>128.0 385.5</b>	AUNICOM <b>122.9 (CTAF) 0</b>
----------------------------	--	----------------------------------



ELEV 1418		TDZE 1418
-----------	--	-----------



**A** 2310

VGSB and RNAVB glidepath coincident  
(VGSB Angle 3.00/TCH 35)

4 NM Holding Pattern

ICAI

FEPAP

SOVHE  
1.8 NM to RW33

RW33

\*RNAV only

GP 3.00°  
TCH 40

CATEGORY	A	B	C	D
LPV DA	1740-1½	322 (400-1½)		NA
RNAVB/ VNAV	1740-1½	322 (400-1½)		NA
RNAVB MDA	1860-1	442 (500-1)		NA
<b>C</b> CIRCLING	1980-1 562 (600-1)	2060-1 642 (700-1)		NA