

WAAS  
CH 53731  
W32A

APP CRS  
319°

Rwy Idg  
TDZE 1206  
Apt Elev 1206

RNAV (GPS) RWY 32

ELBOW LAKE MUNI/PRIDE OF THE PRAIRIE (Y63)

RNP APCH-GPS.

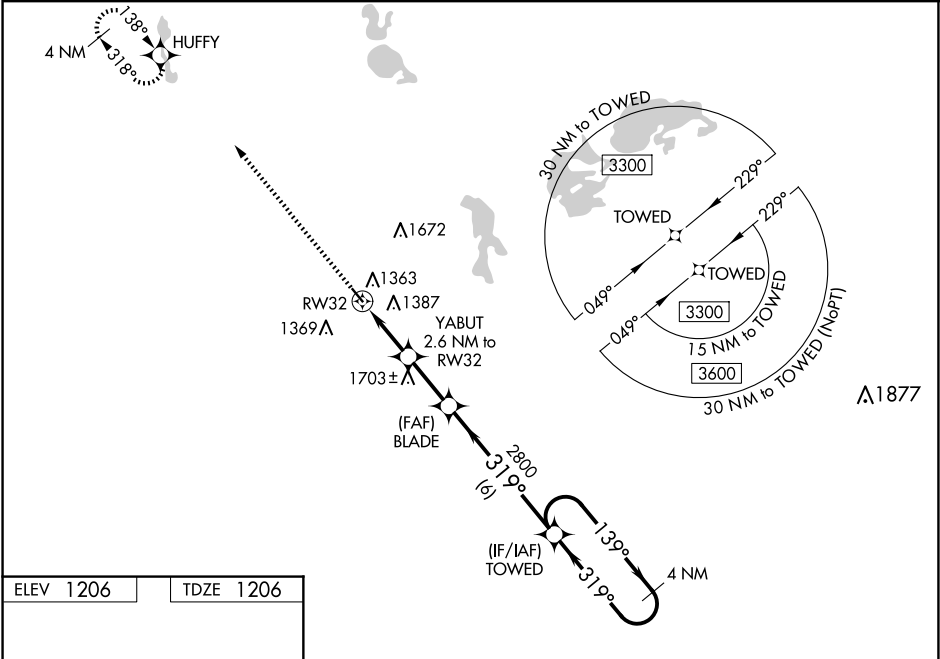
▼

▲ NA

Baro-VNAV NA when using Fergus Falls altimeter setting. For uncompensated Baro-VNAV systems, LNAV/VNAV NA below -17°C or above 54°C. Circling NA northeast of Rwy 14-32. Procedure NA at night. When local altimeter setting not received, use Fergus Falls altimeter setting: increase LPV DA to 1504 feet; increase LNAV/VNAV DA to 1643 feet and visibility all Cats ½ mile; increase all MDAs 60 feet. Circling NA to Rwys 11W and 29W.

MISSED APPROACH:  
Climb to 3300 direct HUFFY and hold.

AWOS-3 118.075	MINNEAPOLIS CENTER 126.1 269.2	CTAF 122.9 0
-------------------	-----------------------------------	-----------------



ELEV 1206

TDZE 1206

3300

HUFFY

VGSI and RNAV glidepath not coincident (VGSI Angle 3.00/TCH 26).

4 NM Holding Pattern

139° → 3300

← 319°

GP 3.00°

TCH 40

YABUT

2.6 NM to RW32

BLADE

2800

319°

2800

2060\*

2.3 NM

6 NM

319° to RW32

3401 x 60

319°

319°

CATEGORY	A	B	C	D
LPV DA	1456-1	250 (300-1)		NA
LNAV/VNAV DA	1595-1 3/8	389 (400-1 3/8)		NA
LNAV MDA	1580-1	374 (400-1)		NA
CIRCLING	1600-1 394 (400-1)	1680-1 474 (500-1)		NA