

WAAS CH 49231 W14A	APP CRS 138°	Rwy Idg 3401 TDZE 1206 Apt Elev 1206
--	------------------------	---

RNAV (GPS) RWY 14

ELBOW LAKE MUNI/PRIDE OF THE PRAIRIE (Y63)

RNP APCH-GPS.

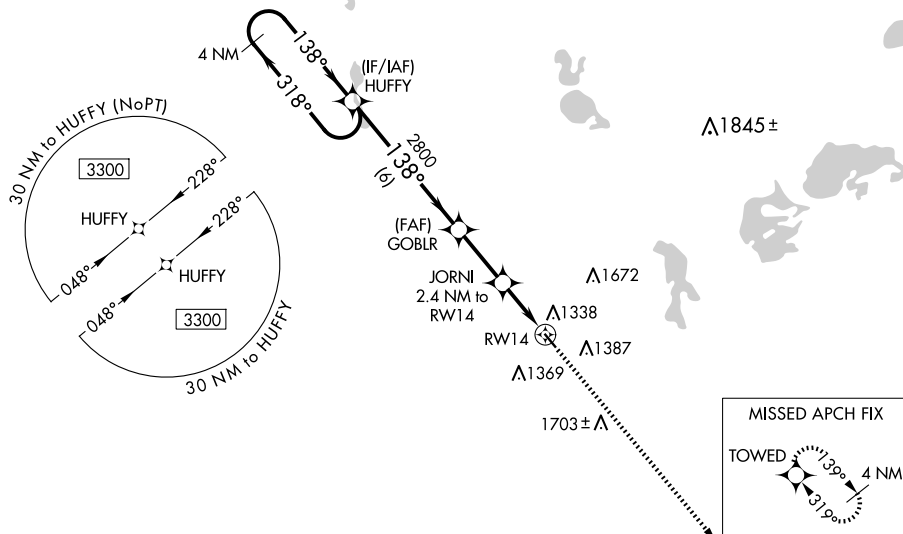
▼ Baro-VNAV NA when using Fergus Falls altimeter setting. For uncompensated Baro-VNAV systems LNAV/VNAV NA below -17°C or above 54°C. Circling NA northeast of Rwy 14-32.

▲ Procedure NA at night. Rwy 14 helicopter visibility reduction below $\frac{3}{4}$ SM NA. When local altimeter setting not received, use Fergus Falls altimeter setting: increase LPV DA to 1504 feet; increase LNAV/VNAV DA to 1605 feet and visibility all Cats $\frac{1}{4}$ mile; increase all MDAs 60 feet. Circling NA to Rwy 11W and 29W.

MISSED APPROACH:
Climb to 3300 direct
TOWED and hold.

AWOS-3
118.075

MINNEAPOLIS CENTER
126.1 269.2

CTAF
122.9 **L**

MISSED APCH FIX

Towed

139°

319°

4 NM

ELEV 1206

TDZE 1206

4 NM Holding Pattern

VGS1 and RNAV glidepath not coincident (VGS1 Angle 3.00/TCH 24).

3300

318°

138°

HUFFY

GOBLR 2800

JORNI 2.4 NM to RW14

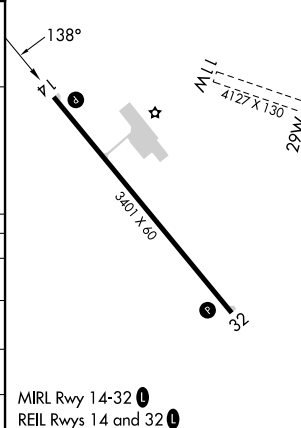
2800

*2000

GP 3.00° TCH 40

3300 TOWED

CATEGORY		A	B	C	D
LPV	DA	1456-1	250 (300-1)	NA	
RNAV/ VNAV	DA	1557-1½	351 (400-½)	NA	
RNAV	MDA	1600-1	394 (400-1)	NA	
CIRCLING		1600-1 394 (400-1)	1680-1 474 (500-1)	NA	



MIRL Rwy 14-32 **L**
REIL Rwy 14 and 32 **L**

RNAV (GPS) RWY 14