

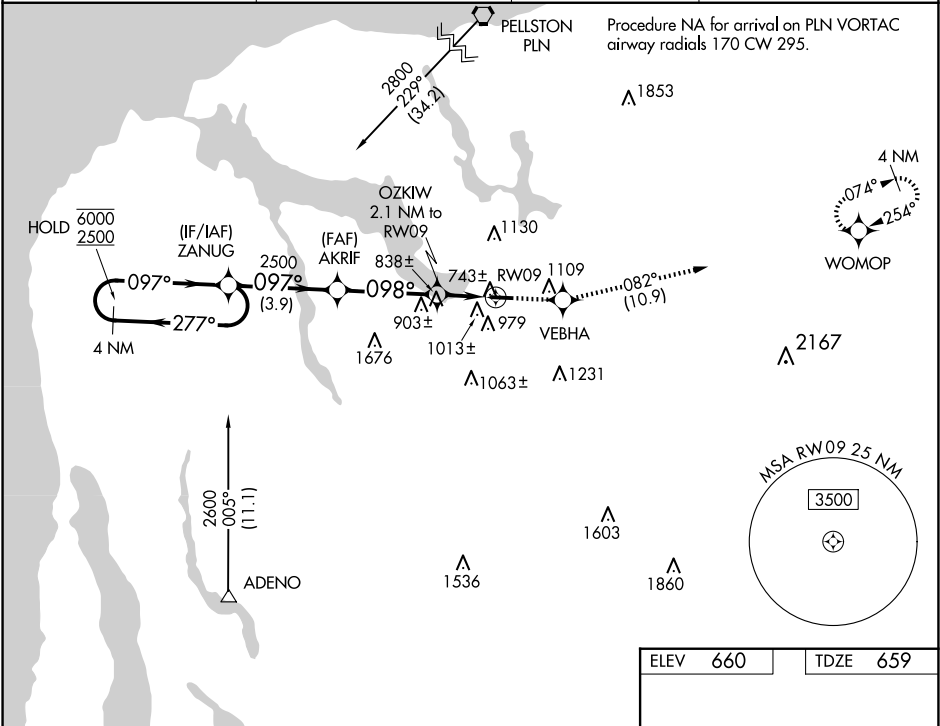
WAAS CH 97526 W09A	APP CRS 098°	Rwy Idg TDZE Apt Elev	3402 659 660
--	------------------------	-----------------------------	---

RNAV (GPS) RWY 9

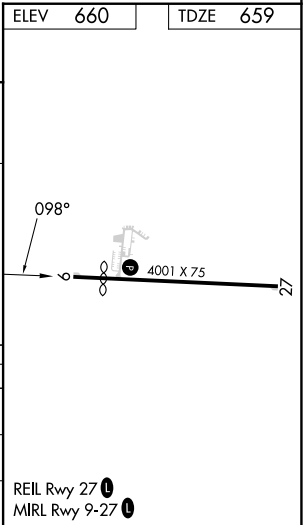
BOYNE CITY MUNI (N98)

RNP APCH - GPS.	MISSED APPROACH: Climb to 3200 direct VEBHA and on track 082° to WOMOP and hold.
<div><div>▼</div><div>▲NA</div></div> Use CVX altimeter setting; when not received, use MGN altimeter setting. Procedure NA at night. Rwy 9 helicopter visibility reduction below 1 SM NA.	

CVX AWOS-3P 120.0	MINNEAPOLIS CENTER 134.6 354.05	UNICOM 122.8 (CTAF)	122.9
-----------------------------	---	-------------------------------	--------------



VGSI and descent angles not coincident (VGSI Angle 4.00/TCH 28).				
4 NM Holding Pattern				
<div><div>6000</div><div>2500</div><div>097°</div><div>097°</div><div>098°</div><div>3.00° TCH 40</div><div>1360</div><div>3.9 NM</div><div>3.6 NM</div><div>2.1 NM</div></div>				
CATEGORY	A	B	C	D
LP MDA	1060-1	401 (400-1)	NA	
INAV MDA	1260-1	601 (600-1)	NA	
CIRCLING	1480-1¼ 820 (900-1¼)	1500-1¼ 840 (900-1¼)	NA	



EC-1, 07 AUG 2025 to 04 SEP 2025

EC-1, 07 AUG 2025 to 04 SEP 2025